

For Research Use Only

# C20orf26 Polyclonal antibody

Catalog Number: 31427-1-AP



## Basic Information

<b>Catalog Number:</b> 31427-1-AP	<b>GenBank Accession Number:</b> BC031674	<b>Purification Method:</b> Antigen affinity Purification
<b>Size:</b> 150ul , Concentration: 750 ug/ml by Nanodrop;	<b>GeneID (NCBI):</b> 26074	<b>Recommended Dilutions:</b> IHC 1:50-1:500 IF/ICC 1:50-1:500
<b>Source:</b> Rabbit	<b>UNIPROT ID:</b> Q8NHU2	
<b>Isotype:</b> IgG	<b>Full Name:</b> chromosome 20 open reading frame 26	
<b>Immunogen Catalog Number:</b> AG35425		

## Applications

<b>Tested Applications:</b> IHC, IF/ICC, ELISA	<b>Positive Controls:</b> IHC : mouse liver tissue, IF/ICC : A431 cells,
<b>Species Specificity:</b> human, mouse	
<b>Note-IHC: suggested antigen retrieval with TE buffer pH 9.0; (*) Alternatively, antigen retrieval may be performed with citrate buffer pH 6.0</b>	

## Background Information

C20orf26, also known as CFAP61 (cilia and flagella associated protein 61), is a protein-coding gene located on human chromosome 20. The protein is predicted to be involved in cilium movement and cilium organization, and it is likely to be located in the axoneme and motile cilium. CFAP61 is also predicted to colocalize with the radial spoke stalk, which is a part of the structural framework of cilia and flagella.

## Storage

**Storage:**  
Store at -20°C. Stable for one year after shipment.  
**Storage Buffer:**  
PBS with 0.02% sodium azide and 50% glycerol pH 7.3.  
Aliquoting is unnecessary for -20°C storage

\*\*\* 20ul sizes contain 0.1% BSA

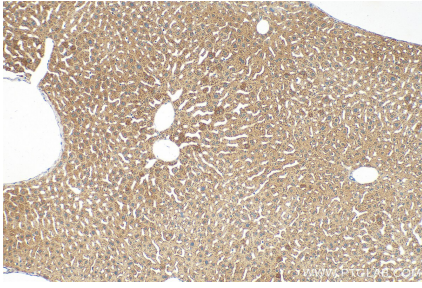
For technical support and original validation data for this product please contact:

T: 1 (888) 4PTGLAB (1-888-478-4522) (toll free in USA), or 1(312) 455-8498 (outside USA)

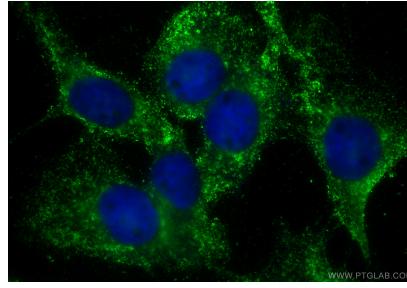
E: [proteintech@ptglab.com](mailto:proteintech@ptglab.com)  
W: [ptglab.com](http://ptglab.com)

This product is exclusively available under Proteintech Group brand and is not available to purchase from any other manufacturer.

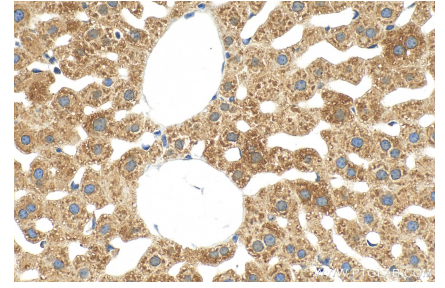
## Selected Validation Data



Immunohistochemical analysis of paraffin-embedded mouse liver tissue slide using 31427-1-AP (C20orf26 antibody) at dilution of 1:200 (under 10x lens). Heat mediated antigen retrieval with Tris-EDTA buffer (pH 9.0).



Immunofluorescent analysis of (-20°C Methanol) fixed A431 cells using C20orf26 antibody (31427-1-AP) at dilution of 1:200 and Multi-rAb CoraLite® Plus 488-Goat Anti-Rabbit Recombinant Secondary Antibody (H+L) (RGAR002).



Immunohistochemical analysis of paraffin-embedded mouse liver tissue slide using 31427-1-AP (C20orf26 antibody) at dilution of 1:200 (under 40x lens). Heat mediated antigen retrieval with Tris-EDTA buffer (pH 9.0).