

For Research Use Only

# SOD1 Polyclonal antibody

Catalog Number: 31400-1-AP



## Basic Information

<b>Catalog Number:</b> 31400-1-AP	<b>GenBank Accession Number:</b> NM_000454.5	<b>Purification Method:</b> Antigen affinity Purification
<b>Size:</b> 150ul , Concentration: 500 µg/ml by Nanodrop;	<b>GeneID (NCBI):</b> 6647	<b>Recommended Dilutions:</b> WB 1:2000-1:12000
<b>Source:</b> Rabbit	<b>UNIPROT ID:</b> P00441	
<b>Isotype:</b> IgG	<b>Full Name:</b> superoxide dismutase 1, soluble	
	<b>Calculated MW:</b> 16kDa	
	<b>Observed MW:</b> 16-20 kDa	

## Applications

<b>Tested Applications:</b> WB, ELISA	<b>Positive Controls:</b> WB : HeLa cells, Jurkat cells, mouse liver tissue, rat liver tissue
<b>Species Specificity:</b> Human, mouse, rat	

## Background Information

Superoxide dismutase 1, soluble (amyotrophic lateral sclerosis 1 (adult)) (SOD1, synonyms: ALS, SOD, ALS1, IPOA) binds copper and zinc ions and is one of two isozymes responsible for destroying free uperoxide radicals in the body. This isozyme is a soluble cytoplasmic protein, acting as a homodimer to convert naturally-occurring but harmful superoxide radicals to molecular oxygen and hydrogen peroxide. The other isozyme is a mitochondrial protein. Mutations in this gene have been implicated as causes of familial amyotrophic lateral sclerosis.

## Storage

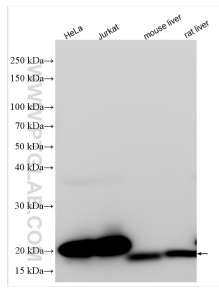
**Storage:**  
Store at -20°C. Stable for one year after shipment.  
**Storage Buffer:**  
PBS with 0.02% sodium azide and 50% glycerol pH 7.3.  
Aliquoting is unnecessary for -20°C storage

\*\*\* 20ul sizes contain 0.1% BSA

For technical support and original validation data for this product please contact:  
T: 1 (888) 4PTGLAB (1-888-478-4522) (toll free in USA), or 1(312) 455-8498 (outside USA)  
E: proteintech@ptglab.com  
W: ptglab.com

This product is exclusively available under Proteintech Group brand and is not available to purchase from any other manufacturer.

## Selected Validation Data



Various lysates were subjected to SDS PAGE followed by western blot with 31400-1-AP (SOD1 antibody) at dilution of 1:6000 incubated at room temperature for 1.5 hours.