

For Research Use Only

IGFBP2 Polyclonal antibody

Catalog Number: 31248-1-AP



Basic Information

| | | |
|---------------------------------------------------------------|-------------------------------------------------|--------------------------------------------------------------|
| Catalog Number: 31248-1-AP | GenBank Accession Number: NM_000597.3 | Purification Method: Antigen affinity purification |
| Size: 150ul , Concentration: 600 ug/ml by Nanodrop; | GeneID (NCBI): 3485 | Recommended Dilutions: WB 1:500-1:3000 |
| Source: Rabbit | UNIPROT ID: P18065 | |
| Isotype: IgG | Full Name: IGF binding protein 2 | |
| | Calculated MW: 35 kDa | |
| | Observed MW: 35 kDa | |

Applications

| | |
|------------------------------------------|-------------------------------------------------------------------------------|
| Tested Applications: WB, ELISA | Positive Controls: WB : HEK-293T cells, SH-SY5Y cells, human plasma |
| Species Specificity: human | |

Background Information

IGFBP2, also known as BP2 and IBP2, is a member of the IGFBP family. It is predominantly expressed in fetal tissues that are highly proliferative, such as the early post-implantation epiblast, the ventricular zone of the rostral neuroepithelium, and has been found to be highly expressed in many cancers (PMID: 31925333). It is a promising protein in non-communicable diseases such as obesity, insulin resistance, metabolic syndrome or type 2 diabetes (PMID: 33498859).

Storage

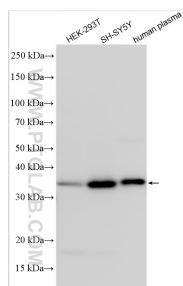
Storage:
Store at -20°C. Stable for one year after shipment.
Storage Buffer:
PBS with 0.02% sodium azide and 50% glycerol pH 7.3.
Aliquoting is unnecessary for -20°C storage

*** 20ul sizes contain 0.1% BSA

For technical support and original validation data for this product please contact:
T: 1 (888) 4PTGLAB (1-888-478-4522) (toll free in USA), or 1(312) 455-8498 (outside USA)
E: proteintech@ptglab.com
W: ptglab.com

This product is exclusively available under Proteintech Group brand and is not available to purchase from any other manufacturer.

Selected Validation Data



Various lysates were subjected to SDS PAGE followed by western blot with 31248-1-AP (IGFBP2 antibody) at dilution of 1:1500 incubated at room temperature for 1.5 hours.