

LAMA2 Polyclonal antibody

Catalog Number: 31181-1-AP

Basic Information

Catalog Number: 31181-1-AP	GenBank Accession Number: NM_000426	Purification Method: Antigen affinity Purification
Size: 150ul , Concentration: 230 ug/ml by Nanodrop;	GeneID (NCBI): 3908	Recommended Dilutions: WB 1:500-1:1000
Source: Rabbit	UNIPROT ID: P24043	IHC 1:50-1:500
Isotype: IgG	Full Name: laminin, alpha 2	IF-P 1:50-1:500
Immunogen Catalog Number: AG34494	Calculated MW: 344 kDa	
	Observed MW: 344 kDa	

Applications

Tested Applications: WB, IHC, IF-P, ELISA	Positive Controls:
Species Specificity: human, mouse, rat	WB : human placenta tissue, mouse skeletal muscle tissue, rat heart tissue
Note-IHC: suggested antigen retrieval with TE buffer pH 9.0; (*) Alternatively, antigen retrieval may be performed with citrate buffer pH 6.0	IHC : mouse skeletal muscle tissue, mouse heart tissue
	IF-P : mouse skeletal muscle tissue,

Background Information

The laminin subunit alpha 2 (LAMA2) gene encodes an alpha 2 chain, which constitutes one of the subunits of laminin 2 (merosin) and laminin 4 (s-merosin). Basal laminae are structural components of the extracellular matrix that influence cell proliferation and differentiation, and laminin subunit alpha 2 (LAMA2) is the major component of the basal laminae- α subunit of laminin. (PMID: 30728939)

Storage

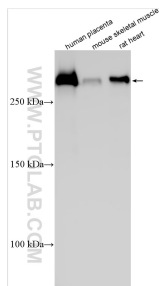
Storage:
Store at -20°C. Stable for one year after shipment.
Storage Buffer:
PBS with 0.02% sodium azide and 50% glycerol pH 7.3.
Aliquoting is unnecessary for -20°C storage

*** 20ul sizes contain 0.1% BSA

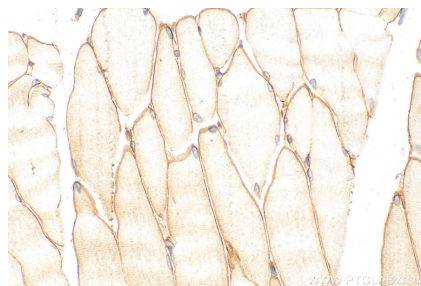
For technical support and original validation data for this product please contact:
T: 1 (888) 4PTGLAB (1-888-478-4522) (toll free in USA), or 1(312) 455-8498 (outside USA)
E: proteintech@ptglab.com
W: ptglab.com

This product is exclusively available under Proteintech Group brand and is not available to purchase from any other manufacturer.

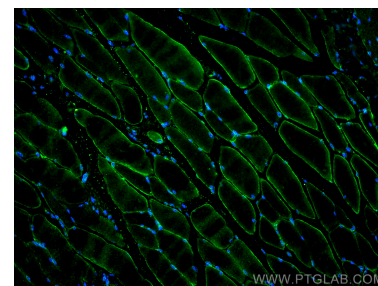
Selected Validation Data



Various lysates were subjected to SDS PAGE followed by western blot with 31181-1-AP (LAMA2 antibody) at dilution of 1:600 incubated at room temperature for 1.5 hours.



Immunohistochemical analysis of paraffin-embedded mouse skeletal muscle tissue slide using 31181-1-AP (LAMA2 antibody) at dilution of 1:200 (under 40x lens). Heat mediated antigen retrieval with Tris-EDTA buffer (pH 9.0).



Immunofluorescent analysis of (4% PFA) fixed paraffin-embedded mouse skeletal muscle tissue using LAMA2 antibody (31181-1-AP) at dilution of 1:200 and Multi-rAb CoraLite® Plus 488-Goat Anti-Rabbit Recombinant Secondary Antibody (H+L) (RGAR002). Heat mediated antigen retrieval with Tris-EDTA buffer (pH 9.0).