

For Research Use Only

FAM46A Polyclonal antibody

Catalog Number: 31006-1-AP



Basic Information

| | | |
|---------------------------------------------------------------|-------------------------------------------------------------------|--------------------------------------------------------------|
| Catalog Number: 31006-1-AP | GenBank Accession Number: BC000683 | Purification Method: Antigen affinity purification |
| Size: 150ul , Concentration: 600 ug/ml by Nanodrop; | GeneID (NCBI): 55603 | Recommended Dilutions: WB 1:5000-1:50000 |
| Source: Rabbit | UNIPROT ID: Q961P4 | |
| Isotype: IgG | Full Name: family with sequence similarity 46, member A | |
| Immunogen Catalog Number: AG33896 | Calculated MW: 50 kDa | |
| | Observed MW: 50 kDa | |

Applications

| | |
|------------------------------------------|---------------------------------------------------------------------|
| Tested Applications: WB, ELISA | Positive Controls: WB : A431 cells, human placenta tissue |
| Species Specificity: human | |

Background Information

FAM46A, also known as TENT5A, is a member of the FAM46 subfamily of the nucleotidyltransferase fold superfamily. It has two isoforms and has been implicated in several human diseases including retinitis pigmentosa, bone abnormalities, cancer and obesity (PMID: 32528962).

Storage

Storage:
Store at -20°C. Stable for one year after shipment.
Storage Buffer:
PBS with 0.02% sodium azide and 50% glycerol pH 7.3.
Aliquoting is unnecessary for -20°C storage

*** 20ul sizes contain 0.1% BSA

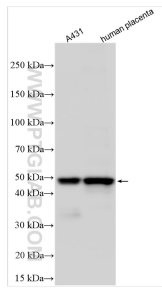
For technical support and original validation data for this product please contact:

T: 1 (888) 4PTGLAB (1-888-478-4522) (toll free in USA), or 1(312) 455-8498 (outside USA)

E: proteintech@ptglab.com
W: ptglab.com

This product is exclusively available under Proteintech Group brand and is not available to purchase from any other manufacturer.

Selected Validation Data



Various lysates were subjected to SDS PAGE followed by western blot with 31006-1-AP (FAM46A antibody) at dilution of 1:10000 incubated at room temperature for 1.5 hours.