

For Research Use Only

CEACAM8 Polyclonal antibody

Catalog Number: 30875-1-AP **1 Publications**



Basic Information

Catalog Number: 30875-1-AP	GenBank Accession Number: BC026263	Purification Method: Antigen affinity purification
Size: 150ul , Concentration: 450 ug/ml by Nanodrop;	GeneID (NCBI): 1088	Recommended Dilutions: WB 1:2000-1:16000
Source: Rabbit	UNIPROT ID: P31997	
Isotype: IgG	Full Name: carcinoembryonic antigen-related cell adhesion molecule 8	
	Calculated MW: 38 kDa	
	Observed MW: 95-100kDa	

Applications

Tested Applications: WB, ELISA	Positive Controls: WB : human saliva,
Cited Applications: IHC, IF	
Species Specificity: human	
Cited Species: human	

Background Information

Carcinoembryonic antigen-related cell adhesion molecule 8 (CEACAM8), also known as CD66b, CGM6 or NCA-95, is a member of the carcinoembryonic antigen (CEA) family which belongs to the immunoglobulin superfamily of cell adhesion molecules (PMID: 16919437). CEACAM8 is a glycosylphosphatidylinositol (GPI)-linked glycoprotein expressed on granulocytes (PMID: 8104998; 18056392). It is involved in regulating adhesion and activation of eosinophils (PMID: 18056392).

Notable Publications

Author	Pubmed ID	Journal	Application
Tao-Lan Zhang	38823438	Transl Res	IHC,IF

Storage

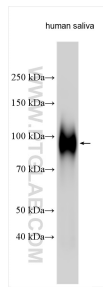
Storage:
Store at -20°C. Stable for one year after shipment.
Storage Buffer:
PBS with 0.02% sodium azide and 50% glycerol pH 7.3.
Aliquoting is unnecessary for -20°C storage

*** 20ul sizes contain 0.1% BSA

For technical support and original validation data for this product please contact:
T: 1 (888) 4PTGLAB (1-888-478-4522) (toll free in USA), or 1(312) 455-8498 (outside USA) E: proteintech@ptglab.com W: ptglab.com

This product is exclusively available under Proteintech Group brand and is not available to purchase from any other manufacturer.

Selected Validation Data



human saliva tissue were subjected to SDS PAGE followed by western blot with 30875-1-AP (CEACAM8 antibody) at dilution of 1:8000 incubated at room temperature for 1.5 hours.