

For Research Use Only

# SUSD2 Polyclonal antibody

Catalog Number:30711-1-AP



## Basic Information

|   |  |   |
|---|--|---|
| <b>Catalog Number:</b><br>30711-1-AP                          | <b>GenBank Accession Number:</b><br>NM_019601  | <b>Purification Method:</b><br>Antigen affinity purification        |
| <b>Size:</b><br>150ul , Concentration: 500 ug/ml by Nanodrop; | <b>GeneID (NCBI):</b><br>56241                 | <b>Recommended Dilutions:</b><br>WB 1:1000-1:6000<br>IHC 1:50-1:500 |
| <b>Source:</b><br>Rabbit                                      | <b>UNIPROT ID:</b><br>Q9UGT4                   |   |
| <b>Isotype:</b><br>IgG  | <b>Full Name:</b><br>sushi domain containing 2 |   |
| <b>Immunogen Catalog Number:</b><br>AG33630                   | <b>Calculated MW:</b><br>90 kDa                |   |
|   | <b>Observed MW:</b><br>60 kDa, 90 kDa, 110 kDa |   |

## Applications

|  |   |
|--|---|
| <b>Tested Applications:</b><br>WB, IHC, ELISA  | <b>Positive Controls:</b><br>WB : SK-BR-3 cells, mouse kidney tissue, rat kidney tissue<br>IHC : mouse kidney tissue, |
| <b>Species Specificity:</b><br>human, mouse, rat   |   |
| <b>Note-IHC: suggested antigen retrieval with TE buffer pH 9.0; (*) Alternatively, antigen retrieval may be performed with citrate buffer pH 6.0</b> |   |

## Background Information

Sushi domain containing 2 (SUSD2) is a type I transmembrane protein that contains a somatomedin B, AMOP, von Willebrand factor type D and Sushi domains, which are frequently found in molecules associated with cell-cell and cell-matrix adhesion. SUSD2 is composed of 822 amino acids with a predicted molecular weight of 90.4 kDa (PMID: 31387209). Three specific SUSD2 bands were present, the glycosylated, full-length protein (~110 kDa), ~90 kDa band represents full-length SUSD2 with minimal glycosylation, and a strong ~60 kDa band, represents a cleaved product of SUSD2 at the GD-PH sequence in the endoplasmic reticulum (PMID:27775699, 32595828).

## Storage

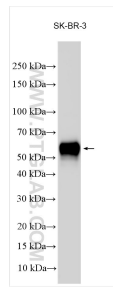
**Storage:**  
Store at -20°C. Stable for one year after shipment.  
**Storage Buffer:**  
PBS with 0.02% sodium azide and 50% glycerol pH 7.3.  
Aliquoting is unnecessary for -20°C storage

\*\*\* 20ul sizes contain 0.1% BSA

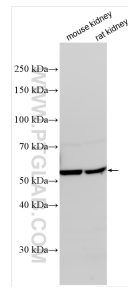
For technical support and original validation data for this product please contact:  
T: 1 (888) 4PTGLAB (1-888-478-4522) (toll free in USA), or 1(312) 455-8498 (outside USA)  
E: proteintech@ptglab.com  
W: ptglab.com

This product is exclusively available under Proteintech Group brand and is not available to purchase from any other manufacturer.

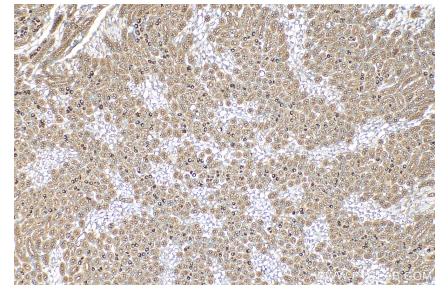
## Selected Validation Data



SK-BR-3 cells were subjected to SDS PAGE followed by western blot with 30711-1-AP (SUSD2 antibody) at dilution of 1:3000 incubated at room temperature for 1.5 hours.



Various lysates were subjected to SDS PAGE followed by western blot with 30711-1-AP (SUSD2 antibody) at dilution of 1:3000 incubated at room temperature for 1.5 hours.



Immunohistochemical analysis of paraffin-embedded mouse kidney tissue slide using 30711-1-AP (SUSD2 antibody) at dilution of 1:200 (under 10x lens). Heat mediated antigen retrieval with Tris-EDTA buffer (pH 9.0).