

For Research Use Only

MFSD2 Polyclonal antibody, PBS Only

Catalog Number:30555-1-PBS



Basic Information

Catalog Number:

30555-1-PBS

Size:

100ug , Concentration: 1 mg/ml by Nanodrop;

Source:

Rabbit

Isotype:

IgG

Immunogen Catalog Number:

AG33064

GenBank Accession Number:

BC092414

GeneID (NCBI):

84879

UNIPROT ID:

Q8NA29

Full Name:

major facilitator superfamily domain containing 2

Calculated MW:

543 aa, 60 kDa

Observed MW:

55-60 kDa

Purification Method:

Antigen affinity purification

Applications

Tested Applications:

WB, Indirect ELISA

Species Specificity:

human, mouse, rat

Background Information

MFSD2 is a transmembrane protein and sodium-dependent lysophosphatidylcholine transporter. MFSD2 is involved in the establishment of the blood-brain barrier and is required for brain growth and function.

Storage

Storage:

Store at -80°C.

Storage Buffer:

PBS Only

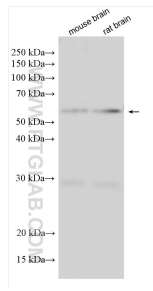
For technical support and original validation data for this product please contact:

T: 1 (888) 4PTGLAB (1-888-478-4522) (toll free in USA), or 1(312) 455-8498 (outside USA)

E: proteintech@ptglab.com
W: ptglab.com

This product is exclusively available under Proteintech Group brand and is not available to purchase from any other manufacturer.

Selected Validation Data



Various lysates were subjected to SDS PAGE followed by western blot with 30555-1-AP (MFSD2 antibody) at dilution of 1:600 incubated at room temperature for 1.5 hours. This data was developed using the same antibody clone with 30555-1-PBS in a different storage buffer formulation.