

For Research Use Only

# CCR2 Polyclonal antibody

Catalog Number: 30420-1-AP



## Basic Information

<b>Catalog Number:</b> 30420-1-AP	<b>GenBank Accession Number:</b> BC074751	<b>Purification Method:</b> Antigen affinity purification
<b>Size:</b> 150ul , Concentration: 400 ug/ml by Nanodrop;	<b>GeneID (NCBI):</b> 729230	<b>Recommended Dilutions:</b> WB 1:500-1:1000 IF/ICC 1:50-1:500
<b>Source:</b> Rabbit	<b>UNIPROT ID:</b> P41597	
<b>Isotype:</b> IgG	<b>Full Name:</b> chemokine (C-C motif) receptor 2	
<b>Immunogen Catalog Number:</b> AG33071	<b>Calculated MW:</b> 374 aa, 42 kDa	
	<b>Observed MW:</b> 70 kDa	

## Applications

<b>Tested Applications:</b> WB, IF/ICC, ELISA	<b>Positive Controls:</b>
<b>Species Specificity:</b> human	<b>WB :</b> HaCaT cells, K-562 cells, THP-1 cells <b>IF/ICC :</b> THP-1 cells,

## Background Information

CCR2 (C-C motif chemokine receptor-2), is a 42-kDa transmembrane protein highly expressed in bone marrow and lymph nodes (PMID: 16150057). It belongs to the G-protein-coupled seven-transmembrane receptor superfamily. CCR2 is the key functional receptor for MCP-1 (Monocyte chemoattractant protein-1) (PMID: 8146186). CCR2 and monocyte chemoattractant proteins (MCPs) play pivotal roles in the development of inflammatory responses and are crucial for the recruitment of immune cells to sites of inflammation. (PMID: 19441905). This antibody recognizes a homodimer consisting of its isoform1 and isoform2 (70 kDa).

## Storage

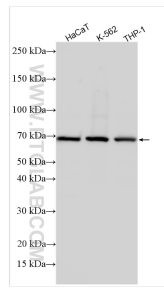
**Storage:**  
Store at -20°C. Stable for one year after shipment.  
**Storage Buffer:**  
PBS with 0.02% sodium azide and 50% glycerol pH 7.3.  
**Aliquoting is unnecessary for -20°C storage**

\*\*\* 20ul sizes contain 0.1% BSA

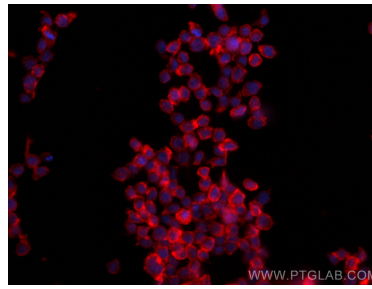
For technical support and original validation data for this product please contact:  
T: 1 (888) 4PTGLAB (1-888-478-4522) (toll free in USA), or 1(312) 455-8498 (outside USA)  
E: [proteintech@ptglab.com](mailto:proteintech@ptglab.com)  
W: [ptglab.com](http://ptglab.com)

This product is exclusively available under Proteintech Group brand and is not available to purchase from any other manufacturer.

## Selected Validation Data



Various lysates were subjected to SDS PAGE followed by western blot with 30420-1-AP (CCR2 antibody) at dilution of 1:500 incubated at room temperature for 1.5 hours.



Immunofluorescent analysis of (4% PFA) fixed THP-1 cells using CCR2 antibody (30420-1-AP) at dilution of 1:200 and CoraLite®594-Conjugated Goat Anti-Rabbit IgG(H+L) (SA00013-4).