

For Research Use Only

p38 MAPK Polyclonal antibody

Catalog Number:30382-1-AP



Basic Information

Catalog Number: 30382-1-AP	GenBank Accession Number: BC031574	Purification Method: Antigen affinity purification
Size: 150ul , Concentration: 350 µg/ml by Nanodrop;	GeneID (NCBI): 1432	Recommended Dilutions: WB 1:1000-1:6000 IF/ICC 1:200-1:800
Source: Rabbit	UNIPROT ID: Q16539	
Isotype: IgG	Full Name: mitogen-activated protein kinase 14	
Immunogen Catalog Number: AG33174	Calculated MW: 360 aa, 41 kDa	
	Observed MW: 38-42 kDa	

Applications

Tested Applications: WB, IF, ELISA	Positive Controls: WB : HeLa cells, NIH/3T3 cells, PC-12 cells
Species Specificity: Human, mouse, rat	IF/ICC : HepG2 cells,

Background Information

MAPK14(mitogen-activated protein kinase 14) is also named as SAPIK2A, p38MAPK, CSBP1, RK, p38, EXIP, Mxi2, CSBP2, PRKM14, PRKM15, CSPB1, p38ALPHA and belongs to the MAP kinase subfamily. MAPK14-signaling is a central pathway for the integration of instructive signals in dendritic cells for T(H)17 differentiation and inflammation(PMID:22231518). It plays an important role in the regulation of hematopoietic stem cell self-renewal in vitro and inhibition of MAPK14 activation with a small molecule inhibitor may represent a novel approach to promote ex vivo expansion of hematopoietic stem cell(PMID:21198398). This protein has 4 isoforms produced by alternative splicing.

Storage

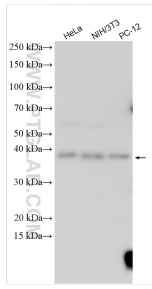
Storage:
Store at -20°C. Stable for one year after shipment.
Storage Buffer:
PBS with 0.02% sodium azide and 50% glycerol pH 7.3.
Aliquoting is unnecessary for -20°C storage

*** 20ul sizes contain 0.1% BSA

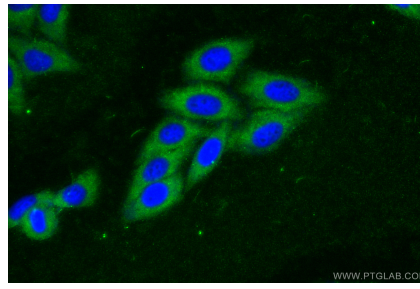
For technical support and original validation data for this product please contact:
T: 1 (888) 4PTGLAB (1-888-478-4522) (toll free in USA), or 1(312) 455-8498 (outside USA)
E: proteintech@ptglab.com
W: ptglab.com

This product is exclusively available under Proteintech Group brand and is not available to purchase from any other manufacturer.

Selected Validation Data



Various lysates were subjected to SDS PAGE followed by western blot with 30382-1-AP (p38 MAPK antibody) at dilution of 1:3000 incubated at room temperature for 1.5 hours.



Immunofluorescent analysis of (-20°C Ethanol) fixed HepG2 cells using p38 MAPK antibody (30382-1-AP) at dilution of 1:400 and CoraLite® 488-Conjugated AffiniPure Goat Anti-Rabbit IgG(H+L).