

For Research Use Only

GM-CSF Polyclonal antibody

Catalog Number:30349-1-AP



Basic Information

Catalog Number:

30349-1-AP

Size:

150ul , Concentration: 400 ug/ml by Nanodrop;

Source:

Rabbit

Isotype:

IgG

GenBank Accession Number:

GeneID (NCBI):

1437

Full Name:

colony stimulating factor 2 (granulocyte-macrophage)

Observed MW:

15kDa,18 kDa ,22 kDa

Purification Method:

Antigen affinity purification

Recommended Dilutions:

WB 1:500-1:2000

Applications

Tested Applications:

WB, ELISA

Species Specificity:

Human

Positive Controls:

WB : NK-92 cells,

Background Information

Granulocyte-macrophage colony-stimulating factor (GM-CSF), also known as colony-stimulating factor 2 (CSF2), is a monomeric glycoprotein secreted by macrophages, T cells, mast cells, natural killer cells, endothelial cells and fibroblasts. GM-CSF is a hematopoietic growth factor that stimulates the development of early erythroid megakaryocytic and eosinophilic progenitor cells (PMID 2990035). GM-CSF stimulates stem cells to produce granulocytes (neutrophils, eosinophils, and basophils) and monocytes (PMID 3021817, 2984574, 6390681).

Storage

Storage:

Store at -20°C. Stable for one year after shipment.

Storage Buffer:

PBS with 0.02% sodium azide and 50% glycerol pH 7.3.

Aliquoting is unnecessary for -20°C storage

*** 20ul sizes contain 0.1% BSA

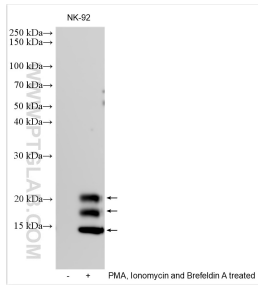
For technical support and original validation data for this product please contact:

T: 1 (888) 4PTGLAB (1-888-478-4522) (toll free in USA), or 1(312) 455-8498 (outside USA)

E: proteintech@ptglab.com
W: ptglab.com

This product is exclusively available under Proteintech Group brand and is not available to purchase from any other manufacturer.

Selected Validation Data



Untreated, and PMA treated NK-92 cells were subjected to SDS PAGE followed by western blot with 30349-1-AP (GM-CSF antibody) at dilution of 1:1000 incubated at room temperature for 1.5 hours.