

For Research Use Only

# IL-1 Beta Polyclonal antibody

Catalog Number: 30342-1-AP



## Basic Information

<b>Catalog Number:</b> 30342-1-AP	<b>GenBank Accession Number:</b> BC008678	<b>Purification Method:</b> Antigen affinity purification
<b>Size:</b> 150ul , Concentration: 350 ug/ml by Nanodrop;	<b>GeneID (NCBI):</b> 3553	<b>Recommended Dilutions:</b> WB 1:1000-1:4000
<b>Source:</b> Rabbit	<b>ENSEMBL Gene ID:</b> ENSG00000125538	
<b>Isotype:</b> IgG	<b>UNIPROT ID:</b> P01584	
	<b>Full Name:</b> interleukin 1, beta	
	<b>Calculated MW:</b> 269 aa, 31 kDa	
	<b>Observed MW:</b> 30-35 kDa	

## Applications

<b>Tested Applications:</b> WB, ELISA	<b>Positive Controls:</b> WB : LPS and Protein transport inhibitor treated THP-1 cells,
<b>Species Specificity:</b> human	

## Background Information

Interleukin-1 is a pro-inflammatory cytokine with multiple biological effects. The IL-1 gene family encodes three proteins: IL-1 $\alpha$ , IL-1 $\beta$  and their naturally occurring inhibitor IL-1RN. IL-1 Beta(IL-1 $\beta$ ), mainly produced by blood monocytes and tissue macrophages, has been implicated in mediating both acute and chronic inflammation. IL-1 $\beta$  is known to be involved in a variety of cellular activities, including cell proliferation, differentiation and apoptosis. IL-1 $\beta$  is emerging as a key mediator of carcinogenesis that characterizes host-environment interactions. Human IL-1 $\beta$  is synthesized as a 31 kDa precursor. To gain activity, the precursor must be cleaved by caspase-1 between Asp116 and Ala117 to yield a 17 kDa mature form.

## Storage

**Storage:**  
Store at -20°C. Stable for one year after shipment.  
**Storage Buffer:**  
PBS with 0.02% sodium azide and 50% glycerol pH 7.3.  
Aliquoting is unnecessary for -20°C storage

\*\*\* 20ul sizes contain 0.1% BSA

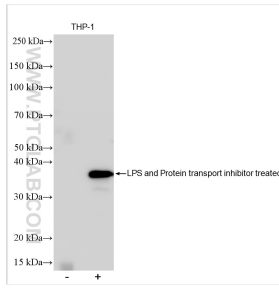
For technical support and original validation data for this product please contact:

T: 1 (888) 4PTGLAB (1-888-478-4522) (toll free in USA), or 1(312) 455-8498 (outside USA)

E: [proteintech@ptglab.com](mailto:proteintech@ptglab.com)  
W: [ptglab.com](http://ptglab.com)

This product is exclusively available under Proteintech Group brand and is not available to purchase from any other manufacturer.

## Selected Validation Data



LPS and Protein transport inhibitor treated THP-1 cells were subjected to SDS PAGE followed by western blot with 30342-1-AP (IL-1 Beta antibody) at dilution of 1:2000 incubated at room temperature for 1.5 hours.