

For Research Use Only

ARL13B Polyclonal antibody

Catalog Number:30332-1-AP



Basic Information

Catalog Number: 30332-1-AP	GenBank Accession Number: BC094725	Purification Method: Antigen affinity purification
Size: 150ul , Concentration: 750 µg/ml by Nanodrop;	GeneID (NCBI): 200894	Recommended Dilutions: WB 1:5000-1:50000 IP 0.5-4.0 ug for IP and 1:1000-1:8000 for WB
Source: Guinea Pig	Full Name: ADP-ribosylation factor-like 13B	IF 1:50-1:500
Isotype: IgG	Calculated MW: 48 kDa	
Immunogen Catalog Number: AG12015	Observed MW: 48-55 kDa	

Applications

Tested Applications: IF, IP, WB, ELISA	Positive Controls:
Species Specificity: Human	WB : HEK-293 cells, HeLa cells, HepG2 cells, K-562 cells, L02 cells
	IP : L02 cells,
	IF : hTERT-RPE1 cells,

Background Information

ARL13B, also named as ARL2L1, is a small ciliary G protein of the Ras superfamily. Localized in the cilia, it is required for cilium biogenesis and sonic hedgehog signaling. Defects in ARL13B are the cause of Joubert syndrome (JS) which is an autosomal recessive disorder characterized by a distinctive cerebellar malformation (PMID: 19906870). This antibody detects two specific bands at 60 kDa and 48 kDa. ARL13b is predicted to be a 48 kDa protein, and the 60 kDa band is likely to represent a modified form of ARL13b. ARL13B can be used to mark the cilia (PMID:22072986). The second antibody is used against guinea pigs.

Storage

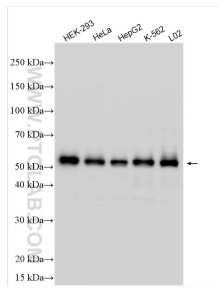
Storage:
Store at -20°C. Stable for one year after shipment.
Storage Buffer:
PBS with 0.02% sodium azide and 50% glycerol pH 7.3.
Aliquoting is unnecessary for -20°C storage

*** 20ul sizes contain 0.1% BSA

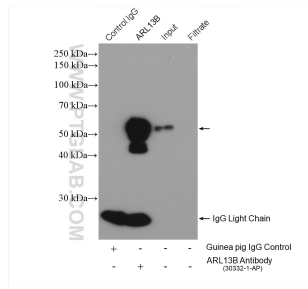
For technical support and original validation data for this product please contact:
T: 1 (888) 4PTGLAB (1-888-478-4522) (toll free in USA), or 1(312) 455-8498 (outside USA)
E: proteintech@ptglab.com
W: ptglab.com

This product is exclusively available under Proteintech Group brand and is not available to purchase from any other manufacturer.

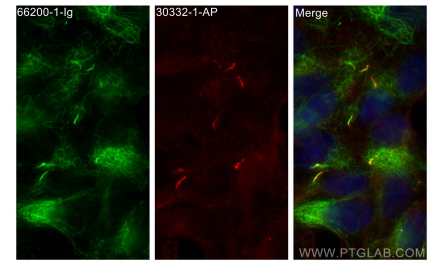
Selected Validation Data



Various lysates were subjected to SDS PAGE followed by western blot with 30332-1-AP (ARL13B antibody) at dilution of 1:10000 incubated at room temperature for 1.5 hours. The second antibody is used against guinea pigs.



IP result of anti-ARL13B(IP:30332-1-AP, 4ug; Detection:30332-1-AP 1:4000) with L02 cells lysate 3080 ug.



Immunofluorescent analysis of (4% PFA) fixed hTERT-RPE1 cells using ARL13B antibody (30332-1-AP) at dilution of 1:200 and CoraLite@488-Conjugated AffiniPure Goat Anti-Mouse IgG(H+L), acetylated Tubulin(Lys40) antibody (66200-1-Ig, Clone: 7E5H8, green).