

For Research Use Only

SMPD1,ASM Polyclonal antibody

Catalog Number:30197-1-AP



Basic Information

Catalog Number: 30197-1-AP	GenBank Accession Number: BC041164	Purification Method: Antigen affinity purification
Size: 150ul , Concentration: 1000 ug/ml by Nanodrop;	GeneID (NCBI): 6609	Recommended Dilutions: WB 1:1000-1:4000 IF/ICC 1:200-1:800
Source: Rabbit	UNIPROT ID: P17405	
Isotype: IgG	Full Name: sphingomyelin phosphodiesterase 1, acid lysosomal	
Immunogen Catalog Number: AG32479	Calculated MW: 70 kDa	
	Observed MW: 68-70 kDa	

Applications

Tested Applications: WB, IF/ICC, ELISA	Positive Controls:
Species Specificity: human, mouse	WB : human placenta tissue, IF/ICC : NIH/3T3 cells,

Background Information

SMPD1(Sphingomyelin phosphodiesterase) is also named as ASM and belongs to the acid sphingomyelinase family. It is an important enzyme in sphingolipid metabolism and plays key roles in apoptosis, immunity, development, and cancer. The deficient activity of this enzyme results in Types A and B Niemann-Pick disease (NPD). This protein has 4 isoforms produced by alternative splicing. SMPD1 can produce a 60 kDa peptide with its signal peptide missing. As a catalytically inactive 75kDa precursor, after signal peptide cleavage, it was processed into smaller non-glycosylated and rapidly degraded 57kDa form in ER-Golgi complex. And 70kDa mature form with major catalytic activity located in lysosomes, which is further processed into 52kDa form (PMID:25853898, PMID:26499107).

Storage

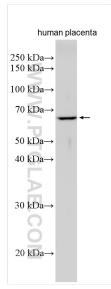
Storage:
Store at -20°C. Stable for one year after shipment.
Storage Buffer:
PBS with 0.02% sodium azide and 50% glycerol pH 7.3.
Aliquoting is unnecessary for -20°C storage

*** 20ul sizes contain 0.1% BSA

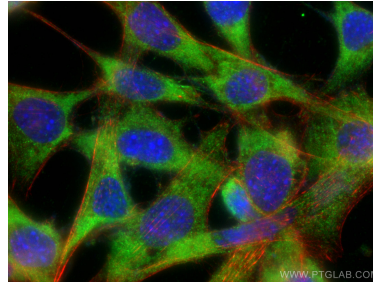
For technical support and original validation data for this product please contact:
T: 1 (888) 4PTGLAB (1-888-478-4522) (toll free in USA), or 1(312) 455-8498 (outside USA)
E: proteintech@ptglab.com
W: ptglab.com

This product is exclusively available under Proteintech Group brand and is not available to purchase from any other manufacturer.

Selected Validation Data



Various lysates were subjected to SDS PAGE followed by western blot with 30197-1-AP (SMPD1,ASM antibody) at dilution of 1:2000 incubated at room temperature for 1.5 hours.



Immunofluorescent analysis of (-20°C Ethanol) fixed NIH/3T3 cells using SMPD1,ASM antibody (30197-1-AP) at dilution of 1:400 and CoraLite®488-Conjugated AffiniPure Goat Anti-Rabbit IgG(H+L), CL594-Phalloidin (red).