

For Research Use Only

KNOP1 Polyclonal antibody

Catalog Number: 30115-1-AP



Basic Information

Catalog Number: 30115-1-AP	GenBank Accession Number: NM_001012991.2	Purification Method: Antigen affinity purification
Size: 150ul , Concentration: 450 ug/ml by Nanodrop;	GeneID (NCBI): 400506	Recommended Dilutions: WB 1:2000-1:14000 IF/ICC 1:200-1:800
Source: Rabbit	UNIPROT ID: Q1ED39	
Isotype: IgG	Full Name: chromosome 16 open reading frame 88	
Immunogen Catalog Number: AG32395	Calculated MW: 52 kDa	
	Observed MW: 60 kDa	

Applications

Tested Applications: WB, IF/ICC, ELISA	Positive Controls:
Species Specificity: Human	WB : K-562 cells, U-251 cells, MCF-7 cells IF/ICC : MCF-7 cells,

Background Information

Lysine-rich nucleolar protein 1 (KNOP1) is a nucleolar protein that interacts with zinc finger 106 protein. Also known as Tsg118, it was first reported in 1999 (3). KNOP1 is predominantly expressed in proliferating somatic cells and in male germ cells, and may therefore be involved in testicular development. (PMID: 37588747)

Storage

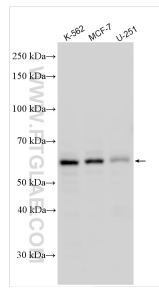
Storage:
Store at -20°C. Stable for one year after shipment.
Storage Buffer:
PBS with 0.02% sodium azide and 50% glycerol pH 7.3.
Aliquoting is unnecessary for -20°C storage

*** 20ul sizes contain 0.1% BSA

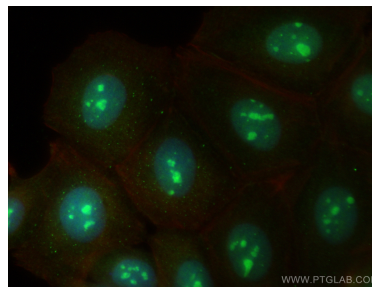
For technical support and original validation data for this product please contact:
T: 1 (888) 4PTGLAB (1-888-478-4522) (toll free in USA), or 1(312) 455-8498 (outside USA)
E: proteintech@ptglab.com
W: ptglab.com

This product is exclusively available under Proteintech Group brand and is not available to purchase from any other manufacturer.

Selected Validation Data



Various lysates were subjected to SDS PAGE followed by western blot with 30115-1-AP (KNOP1 antibody) at dilution of 1:7000 incubated at room temperature for 1.5 hours.



Immunofluorescent analysis of (4% PFA) fixed MCF-7 cells using KNOP1 antibody (30115-1-AP) at dilution of 1:400 and CoraLite®488-Conjugated AffiniPure Goat Anti-Rabbit IgG(H+L), CL594-phalloidin (red).