

For Research Use Only

# TCF21 Polyclonal antibody

Catalog Number:30077-1-AP



## Basic Information

|   |  |  |
|---|--|--|
| <b>Catalog Number:</b><br>30077-1-AP                          | <b>GenBank Accession Number:</b><br>BC025697 | <b>Purification Method:</b><br>Antigen affinity purification |
| <b>Size:</b><br>150ul , Concentration: 750 ug/ml by Nanodrop; | <b>GeneID (NCBI):</b><br>6943                | <b>Recommended Dilutions:</b><br>WB 1:1000-1:4000            |
| <b>Source:</b><br>Rabbit                                      | <b>UNIPROT ID:</b><br>O43680                 |  |
| <b>Isotype:</b><br>IgG  | <b>Full Name:</b><br>transcription factor 21 |  |
| <b>Immunogen Catalog Number:</b><br>AG32510                   | <b>Calculated MW:</b><br>179 aa, 20 kDa      |  |
|   | <b>Observed MW:</b><br>25 kDa                |  |

## Applications

|  |  |
|--|--|
| <b>Tested Applications:</b><br>WB, ELISA | <b>Positive Controls:</b><br>WB : MG-63 cells, |
| <b>Species Specificity:</b><br>human     |  |

## Background Information

TCF21 (Transcription factor 21), also known as POD1. It is predicted to be located in the nucleus. TCF21 is a prognostic marker in Breast invasive carcinoma, Kidney renal clear cell carcinoma, Liver hepatocellular carcinoma, Lung squamous cell carcinoma. This protein is involved in the epithelial-mesenchymal interaction in the morphogenesis of kidney and lung, including epithelial differentiation and branching morphogenesis. It may play a role in the specialization or differentiation of one or more epicardial cell types. The molecular weight of TCF21 is 20 kDa, it also has phosphorylation modification.

## Storage

**Storage:**  
Store at -20°C. Stable for one year after shipment.  
**Storage Buffer:**  
PBS with 0.02% sodium azide and 50% glycerol pH 7.3.  
Aliquoting is unnecessary for -20°C storage

\*\*\* 20ul sizes contain 0.1% BSA

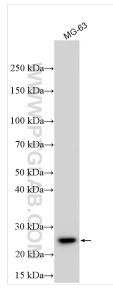
For technical support and original validation data for this product please contact:

T: 1 (888) 4PTGLAB (1-888-478-4522) (toll free in USA), or 1(312) 455-8498 (outside USA)

E: proteintech@ptglab.com  
W: ptglab.com

This product is exclusively available under Proteintech Group brand and is not available to purchase from any other manufacturer.

## Selected Validation Data



Various lysates were subjected to SDS PAGE followed by western blot with 30077-1-AP (TCF21 antibody) at dilution of 1:2000 incubated at room temperature for 1.5 hours.