

For Research Use Only

TSPAN13 Polyclonal antibody

Catalog Number:30072-1-AP



Basic Information

Catalog Number: 30072-1-AP	GenBank Accession Number: BC033863	Purification Method: Antigen affinity purification
Size: 150ul , Concentration: 600 ug/ml by Nanodrop;	GeneID (NCBI): 27075	Recommended Dilutions: WB 1:2000-1:16000
Source: Rabbit	UNIPROT ID: O95857	
Isotype: IgG	Full Name: tetraspanin 13	
Immunogen Catalog Number: AG32345	Calculated MW: 204 aa, 22 kDa	
	Observed MW: 28-35 kDa	

Applications

Tested Applications: WB, ELISA	Positive Controls: WB : PC-3 cells,
Species Specificity: human	

Background Information

TSPAN13 (also known as NET6 or TM4SF13) is a membrane protein of the tetraspanin superfamily, which are characterized by the presence of four conserved transmembrane regions. Many of these members have been implicated in signal transduction, cell-cell interactions, and cellular activation and development. Overexpression of TSPAN13 has been reported in prostate cancer, suggesting that TSPAN13 may have an important role in the progression of prostate cancer (PMID: 19148481). The experimentally determined molecular mass of 28-35 kDa is larger than the calcular molecular weight of 22 kDa, which could be a result of post-translational modifications (PMID: 23648579).

Storage

Storage:
Store at -20°C. Stable for one year after shipment.
Storage Buffer:
PBS with 0.02% sodium azide and 50% glycerol pH 7.3.
Aliquoting is unnecessary for -20°C storage

*** 20ul sizes contain 0.1% BSA

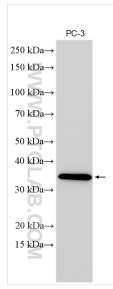
For technical support and original validation data for this product please contact:

T: 1 (888) 4PTGLAB (1-888-478-4522) (toll free in USA), or 1(312) 455-8498 (outside USA)

E: proteintech@ptglab.com
W: ptglab.com

This product is exclusively available under Proteintech Group brand and is not available to purchase from any other manufacturer.

Selected Validation Data



PC-3 cells were subjected to SDS PAGE followed by western blot with 30072-1-AP (TSPAN13 antibody) at dilution of 1:8000 incubated at room temperature for 1.5 hours.