

For Research Use Only

# SCNN1G Polyclonal antibody

Catalog Number:30037-1-AP



## Basic Information

<b>Catalog Number:</b> 30037-1-AP	<b>GenBank Accession Number:</b> BC059391	<b>Purification Method:</b> Antigen affinity purification
<b>Size:</b> 150ul , Concentration: 550 µg/ml by Nanodrop;	<b>GeneID (NCBI):</b> 6340	<b>Recommended Dilutions:</b> WB 1:500-1:2000
<b>Source:</b> Rabbit	<b>UNIPROT ID:</b> P51170	
<b>Isotype:</b> IgG	<b>Full Name:</b> sodium channel, nonvoltage-gated 1, gamma	
<b>Immunogen Catalog Number:</b> AG32176	<b>Calculated MW:</b> 74 kDa	
	<b>Observed MW:</b> 74 kDa	

## Applications

<b>Tested Applications:</b> WB, ELISA	<b>Positive Controls:</b> WB : A431 cells, COLO 320 cells, PC-3 cells, pig kidney tissue
<b>Species Specificity:</b> human, pig	

## Background Information

SCNN1G (sodium channel, non-voltage-gated 1, gamma), also known as ENaC gamma (epithelial Na<sup>+</sup>) channel subunit gamma) or amiloride-sensitive sodium channel subunit gamma, is the gamma subunit of the epithelial Na<sup>+</sup> channel (ENaC). ENaC is expressed in the apical membrane of salt-absorbing epithelia of the kidney, distal colon, and lung. ENaC is a non-voltage gated, constitutively active channel highly selective for sodium. It has an essential role in salt and fluid homeostasis across epithelial tissues. Mutations in the gene of SCNN1G have been associated with Liddle syndrome. Native SCNN1G has a calculated molecular weight of 74 kDa and may undergo post-transcriptional modifications, including glycosylation and proteolytic cleavage (PMID: 12871941; 18086683).

## Storage

**Storage:**  
Store at -20°C. Stable for one year after shipment.  
**Storage Buffer:**  
PBS with 0.02% sodium azide and 50% glycerol pH 7.3.  
Aliquoting is unnecessary for -20°C storage

\*\*\* 20ul sizes contain 0.1% BSA

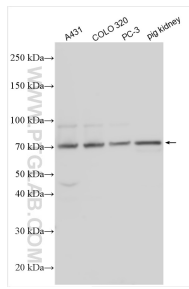
For technical support and original validation data for this product please contact:

T: 1 (888) 4PTGLAB (1-888-478-4522) (toll free in USA), or 1(312) 455-8498 (outside USA)

E: [proteintech@ptglab.com](mailto:proteintech@ptglab.com)  
W: [ptglab.com](http://ptglab.com)

This product is exclusively available under Proteintech Group brand and is not available to purchase from any other manufacturer.

## Selected Validation Data



Various lysates were subjected to SDS PAGE followed by western blot with 30037-1-AP (SCNN1G antibody) at dilution of 1:1000 incubated at room temperature for 1.5 hours.