

For Research Use Only

# POLD2 Polyclonal antibody

Catalog Number: 29765-1-AP



## Basic Information

<b>Catalog Number:</b> 29765-1-AP	<b>GenBank Accession Number:</b> BC000459	<b>Purification Method:</b> Antigen affinity purification
<b>Size:</b> 150ul , Concentration: 400 µg/ml by Nanodrop;	<b>GeneID (NCBI):</b> 5425	<b>Recommended Dilutions:</b> WB 1:1000-1:5000 IHC 1:200-1:800 IF 1:500-1:2000
<b>Source:</b> Rabbit	<b>Full Name:</b> polymerase (DNA directed), delta 2, regulatory subunit 50kDa	
<b>Isotype:</b> IgG	<b>Calculated MW:</b> 51 kDa	
<b>Immunogen Catalog Number:</b> AG31521	<b>Observed MW:</b> 51 kDa	

## Applications

### Tested Applications:

IF, IHC, WB, ELISA

### Species Specificity:

Human

**Note-IHC: suggested antigen retrieval with TE buffer pH 9.0; (\*) Alternatively, antigen retrieval may be performed with citrate buffer pH 6.0**

### Positive Controls:

**WB:** HEK-293T cells, HeLa cells, Jurkat cells, SGC-7901 cells, U-251 cells

**IHC:** human colon tissue, human lung cancer tissue

**IF:** HeLa cells,

## Background Information

POLD2, also named as DNA polymerase delta subunit 2, is a 469 amino acid protein, which belongs to the DNA polymerase delta/II small subunit family. The function of the small subunit is not yet clear. POLD2 has an essential function for the small subunit in the heterodimeric core enzyme.

## Storage

### Storage:

Store at -20°C. Stable for one year after shipment.

### Storage Buffer:

PBS with 0.02% sodium azide and 50% glycerol pH 7.3.

Aliquoting is unnecessary for -20°C storage

\*\*\* 20ul sizes contain 0.1% BSA

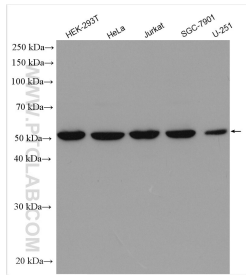
For technical support and original validation data for this product please contact:

T: 1 (888) 4PTGLAB (1-888-478-4522) (toll free in USA), or 1(312) 455-8498 (outside USA)

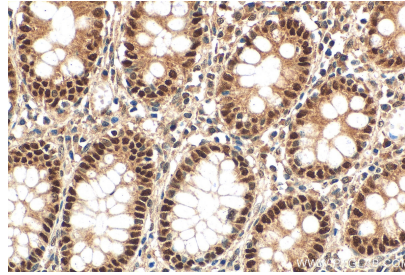
E: [proteintech@ptglab.com](mailto:proteintech@ptglab.com)  
W: [ptglab.com](http://ptglab.com)

This product is exclusively available under Proteintech Group brand and is not available to purchase from any other manufacturer.

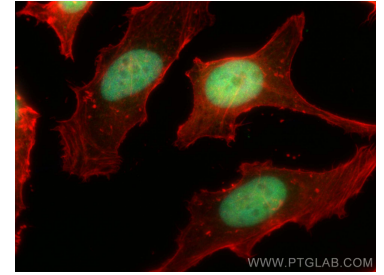
## Selected Validation Data



Various lysates were subjected to SDS PAGE followed by western blot with 29765-1-AP (POLD2 antibody) at dilution of 1:2500 incubated at room temperature for 1.5 hours.



Immunohistochemical analysis of paraffin-embedded human colon tissue slide using 29765-1-AP (POLD2 antibody) at dilution of 1:400 (under 40x lens). Heat mediated antigen retrieval with Tris-EDTA buffer (pH 9.0).



Immunofluorescent analysis of (4% PFA) fixed HeLa cells using POLD2 antibody (29765-1-AP) at dilution of 1:1000 and CoraLite® 488-Conjugated AffiniPure Goat Anti-Rabbit IgG(H+L), CL594-phalloidin (red).