

For Research Use Only

LAMTOR1 Polyclonal antibody

Catalog Number: 29611-1-AP



Basic Information

Catalog Number: 29611-1-AP	GenBank Accession Number: BC001706	Purification Method: Antigen affinity purification
Size: 150ul , Concentration: 450 ug/ml by Nanodrop;	GeneID (NCBI): 55004	Recommended Dilutions: WB 1:5000-1:50000 IF/ICC 1:50-1:500
Source: Rabbit	UNIPROT ID: Q6IAA8	
Isotype: IgG	Full Name: chromosome 11 open reading frame 59	
Immunogen Catalog Number: AG31215	Calculated MW: 161 aa, 18 kDa	
	Observed MW: 18 kDa	

Applications

Tested Applications: WB, IF/ICC, ELISA	Positive Controls:
Species Specificity: human	WB : A431 cells, HEK-293 cells, HeLa cells, HepG2 cells, MCF-7 cells IF/ICC : U-87 MG cells,

Background Information

LAMTOR1 (Late Endosome/Lysosome-Associated Membrane Protein 1) is a membrane protein specifically localized to the surface of late endosomes/lysosomes and is involved in lysosomal transport and maturation. LAMTOR1 is a key component of the lysosomal articulating protein complex Ragulator, which is required for the localization of the Ragulator complex to lysosomes. LAMTOR1 is a key component of the lysosomal bridging protein complex Ragulator and is required for the localization of the Ragulator complex to the lysosome. LAMTOR1 is involved in autophagy, cell growth, immune regulation, cancer development, and regulatory pathways of glucose metabolism. Recent studies have shown that in calorie restriction, lithocholic acid activates AMPK through the glucose-sensing pathway (the lysosomal pathway) and the body senses the metabolic signals induced by calorie restriction and exerts its role in slowing down the effects of aging and prolonging the lifespan, whereas deletion of LAMTOR1 results in the inability of AMPK to be activated in order to play its role.

Storage

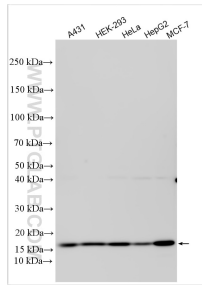
Storage:
Store at -20°C. Stable for one year after shipment.
Storage Buffer:
PBS with 0.02% sodium azide and 50% glycerol pH 7.3.
Aliquoting is unnecessary for -20°C storage

*** 20ul sizes contain 0.1% BSA

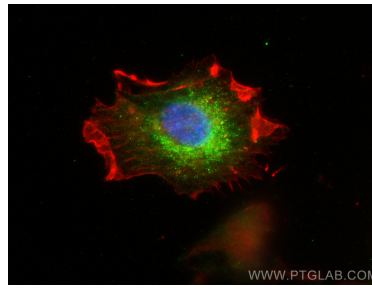
For technical support and original validation data for this product please contact:
T: 1 (888) 4PTGLAB (1-888-478-4522) (toll free in USA), or 1(312) 455-8498 (outside USA)
E: proteintech@ptglab.com
W: ptglab.com

This product is exclusively available under Proteintech Group brand and is not available to purchase from any other manufacturer.

Selected Validation Data



Various lysates were subjected to SDS PAGE followed by western blot with 29611-1-AP (LAMTOR1 antibody) at dilution of 1:30000 incubated at room temperature for 1.5 hours.



Immunofluorescent analysis of (4% PFA) fixed U-87 MG cells using LAMTOR1 antibody (29611-1-AP) at dilution of 1:200 and Multi-Ab CoraLite® Plus 488-Goat Anti-Rabbit Recombinant Secondary Antibody (H+L) (RGAR002), CL594-phalloidin (red).