

For Research Use Only

# Glutamate receptor 3/GluA3 Polyclonal antibody

Catalog Number: 29588-1-AP

3 Publications



## Basic Information

**Catalog Number:**

29588-1-AP

**Size:**

150ul, Concentration: 500 ug/ml by Nanodrop;

**Source:**

Rabbit

**Isotype:**

IgG

**Immunogen Catalog Number:**

AG30898

**GenBank Accession Number:**

NM\_007325

**GeneID (NCBI):**

2892

**UNIPROT ID:**

P42263

**Full Name:**

glutamate receptor, ionotropic, AMPA 3

**Calculated MW:**

101 kDa

**Observed MW:**

101 kDa

**Purification Method:**

Antigen affinity purification

**Recommended Dilutions:**

WB 1:1000-1:6000

IP 0.5-4.0 ug for 1.0-3.0 mg of total protein lysate

IF-P 1:50-1:500

## Applications

**Tested Applications:**

WB, IF-P, IP, ELISA

**Cited Applications:**

WB, IHC

**Species Specificity:**

human, mouse, rat

**Cited Species:**

mouse

**Positive Controls:**

WB : mouse brain tissue, rat brain tissue

IP : mouse brain tissue,

IF-P : rat brain tissue, mouse brain tissue

## Background Information

Glutamate receptors are the predominant excitatory neurotransmitter receptors in the mammalian brain and are activated in a variety of normal neurophysiologic processes. GRIA3 (Glutamate ionotropic receptor AMPA type subunit 3), also known as Glutamate receptor R3 or A3 (GluR3 or GluA3), is associated with X-linked intellectual disability (ID), dysmorphic features, and non-syndromic epilepsy (PMID: 32977175). GRIA3 also plays a role as a mediator of tumor progression in pancreatic cancer downstream CUX1 (PMID: 20689760).

## Notable Publications

Author	Pubmed ID	Journal	Application
Junwen Chen	39214326	Brain Res	WB
Ling-Shuang Zhu	39160208	Cell Discov	WB
Kefu Liu	38455972	iScience	IHC

## Storage

**Storage:**

Store at -20°C. Stable for one year after shipment.

**Storage Buffer:**

PBS with 0.02% sodium azide and 50% glycerol pH 7.3.

Aliquoting is unnecessary for -20°C storage

\*\*\* 20ul sizes contain 0.1% BSA

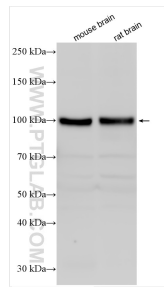
For technical support and original validation data for this product please contact:

T: 1 (888) 4PTGLAB (1-888-478-4522) (toll free in USA), or 1(312) 455-8498 (outside USA)

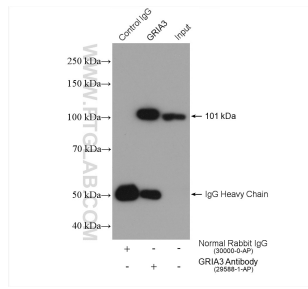
E: [proteintech@ptglab.com](mailto:proteintech@ptglab.com)  
W: [ptglab.com](http://ptglab.com)

This product is exclusively available under Proteintech Group brand and is not available to purchase from any other manufacturer.

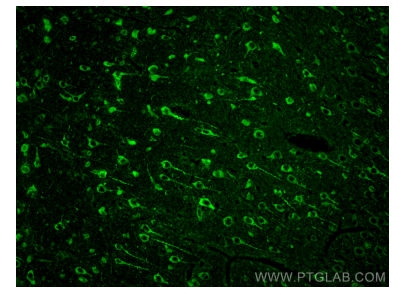
## Selected Validation Data



Various lysates were subjected to SDS PAGE followed by western blot with 29588-1-AP (Glutamate receptor 3/GluA3 antibody) at dilution of 1:3000 incubated at room temperature for 1.5 hours.



IP result of anti-Glutamate receptor 3/GluA3 (IP:29588-1-AP, 4ug; Detection:29588-1-AP 1:2000) with mouse brain tissue lysate 1280 ug.



Immunofluorescent analysis of (4% PFA) fixed paraffin-embedded rat brain tissue using Glutamate receptor 3/GluA3 antibody (29588-1-AP) at dilution of 1:200 and CoraLite®488-Conjugated Goat Anti-Rabbit IgG(H+L) (SA00013-2). Heat mediated antigen retrieval with Tris-EDTA buffer (pH 9.0).