

For Research Use Only

# RPS6KA1 Polyclonal antibody

Catalog Number: 29224-1-AP

Featured Product



## Basic Information

**Catalog Number:**

29224-1-AP

**Size:**

150ul, Concentration: 500 ug/ml by Nanodrop;

**Source:**

Rabbit

**Isotype:**

IgG

**GenBank Accession Number:**

BC014966

**GeneID (NCBI):**

6195

**UNIPROT ID:**

Q15418

**Full Name:**

ribosomal protein S6 kinase, 90kDa, polypeptide 1

**Calculated MW:**

735 aa, 83 kDa

**Observed MW:**

75-95 kDa

**Purification Method:**

Antigen affinity purification

**Recommended Dilutions:**

WB 1:1000-1:4000

## Applications

**Tested Applications:**

WB, ELISA

**Species Specificity:**

human, mouse

**Positive Controls:**

WB : K-562 cells, HeLa cells, A431 cells

## Background Information

The 90 kDa ribosomal S6 kinases (RSK1-4) are a family of widely expressed serine/threonine kinases and play an important role in the MAPK signaling cascade and act downstream of ERK1/2 signaling. It can mediate mitogenic and stress-induced activation of the transcription factors CREB1, ETV1/ER81 and NR4A1/NUR77. RSK1 (RPS6KA1) is also designated as p90RSK associated with cellular proliferation, survival and differentiation.

## Storage

**Storage:**

Store at -20°C. Stable for one year after shipment.

**Storage Buffer:**

PBS with 0.02% sodium azide and 50% glycerol pH 7.3.

Aliquoting is unnecessary for -20°C storage

\*\*\* 20ul sizes contain 0.1% BSA

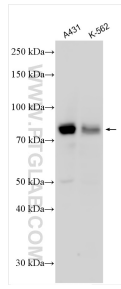
For technical support and original validation data for this product please contact:

T: 1 (888) 4PTGLAB (1-888-478-4522) (toll free in USA), or 1(312) 455-8498 (outside USA)

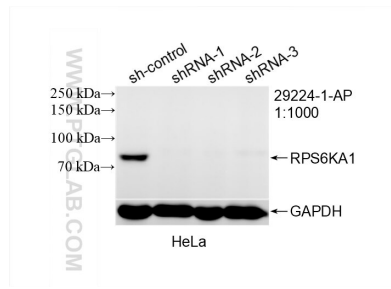
E: [proteintech@ptglab.com](mailto:proteintech@ptglab.com)  
W: [ptglab.com](http://ptglab.com)

This product is exclusively available under Proteintech Group brand and is not available to purchase from any other manufacturer.

## Selected Validation Data



Various lysates were subjected to SDS PAGE followed by western blot with 29224-1-AP (RPS6KA1 antibody) at dilution of 1:2000 incubated at room temperature for 1.5 hours.



WB result of RPS6KA1 antibody (29224-1-AP; 1:1000; incubated at room temperature for 1.5 hours) with sh-Control and sh-RPS6KA1 transfected HeLa cells.