

For Research Use Only

# G6PC Polyclonal antibody, PBS Only

Catalog Number: 29084-1-PBS



## Basic Information

Catalog Number:

29084-1-PBS

Size:

100ug, Concentration: 1 mg/ml by Nanodrop;

Source:

Rabbit

Isotype:

IgG

Immunogen Catalog Number:

AG30614

GenBank Accession Number:

BC130478

GeneID (NCBI):

2538

UNIPROT ID:

P35575

Full Name:

glucose-6-phosphatase, catalytic subunit

Calculated MW:

357 aa, 40 kDa

Observed MW:

40 kDa

Purification Method:

Antigen affinity purification

## Applications

Tested Applications:

WB, Indirect ELISA

Species Specificity:

human

## Background Information

Glucose-6-phosphatase- $\alpha$  (G6PC) is a key enzyme in glucose homeostasis that catalyzes the hydrolysis of glucose-6-phosphate to glucose and phosphate in the terminal step of gluconeogenesis and glycogenolysis. G6PC activity is restricted to the liver, the kidney cortex and the small intestine and confers on these three organs the capacity to release glucose into the systemic circulation (PMID: 21983240). The encoded enzyme is anchored to the ER by nine transmembrane helices with the amino (N)-terminus in the lumen and the carboxyl (C)-terminus in the cytoplasm (PMID: 15542400).

## Storage

Storage:

Store at  $-80^{\circ}\text{C}$ .

Storage Buffer:

PBS Only

For technical support and original validation data for this product please contact:

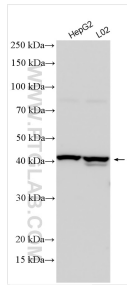
T: 1 (888) 4PTGLAB (1-888-478-4522) (toll free in USA), or 1(312) 455-8498 (outside USA)

E: [proteintech@ptglab.com](mailto:proteintech@ptglab.com)

W: [ptglab.com](http://ptglab.com)

**This product is exclusively available under Proteintech Group brand and is not available to purchase from any other manufacturer.**

## Selected Validation Data



Various lysates were subjected to SDS PAGE followed by western blot with 29084-1-AP (G6PC antibody) at dilution of 1:3000 incubated at room temperature for 1.5 hours. This data was developed using the same antibody clone with 29084-1-PBS in a different storage buffer formulation.