

For Research Use Only

G6PC Polyclonal antibody

Catalog Number: 29084-1-AP



Basic Information

Catalog Number: 29084-1-AP	GenBank Accession Number: BC130478	Purification Method: Antigen affinity purification
Size: 150ul , Concentration: 700 µg/ml by Nanodrop;	GeneID (NCBI): 2538	Recommended Dilutions: WB 1:1000-1:6000
Source: Rabbit	UNIPROT ID: P35575	
Isotype: IgG	Full Name: glucose-6-phosphatase, catalytic subunit	
Immunogen Catalog Number: AG30614	Calculated MW: 357 aa, 40 kDa	
	Observed MW: 40 kDa	

Applications

Tested Applications: WB, ELISA	Positive Controls: WB : HepG2 cells, L02 cells
Species Specificity: human	

Background Information

Glucose-6-phosphatase- α (G6PC) is a key enzyme in glucose homeostasis that catalyzes the hydrolysis of glucose-6-phosphate to glucose and phosphate in the terminal step of gluconeogenesis and glycogenolysis. G6PC activity is restricted to the liver, the kidney cortex and the small intestine and confers on these three organs the capacity to release glucose into the systemic circulation (PMID: 21983240). The encoded enzyme is anchored to the ER by nine transmembrane helices with the amino (N)-terminus in the lumen and the carboxyl (C)-terminus in the cytoplasm (PMID: 15542400).

Storage

Storage:
Store at -20°C. Stable for one year after shipment.
Storage Buffer:
PBS with 0.02% sodium azide and 50% glycerol pH 7.3.
Aliquoting is unnecessary for -20°C storage

*** 20ul sizes contain 0.1% BSA

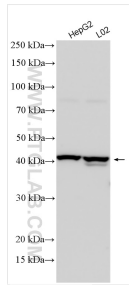
For technical support and original validation data for this product please contact:

T: 1 (888) 4PTGLAB (1-888-478-4522) (toll free in USA), or 1(312) 455-8498 (outside USA)

E: proteintech@ptglab.com
W: ptglab.com

This product is exclusively available under Proteintech Group brand and is not available to purchase from any other manufacturer.

Selected Validation Data



Various lysates were subjected to SDS PAGE followed by western blot with 29084-1-AP (G6PC antibody) at dilution of 1:3000 incubated at room temperature for 1.5 hours.