

For Research Use Only

# SARS-CoV-2 Envelope Protein Polyclonal antibody

Catalog Number: 28904-1-AP **3 Publications**



## Basic Information

<b>Catalog Number:</b> 28904-1-AP	<b>GenBank Accession Number:</b> NC_045512	<b>Purification Method:</b> Antigen affinity purification
<b>Size:</b> 150ul , Concentration: 575 ug/ml by Nanodrop;	<b>GeneID (NCBI):</b> 43740570	
<b>Source:</b> Rabbit	<b>UNIPROT ID:</b> PODTC4	
<b>Isotype:</b> IgG	<b>Full Name:</b> COVID-19 E Protein	
<b>Immunogen Catalog Number:</b> AG30690		

## Applications

**Tested Applications:**  
ELISA

**Cited Applications:**  
WB, IF

**Species Specificity:**  
virus

**Cited Species:**  
human

## Background Information

Envelope protein of coronaviruses is a structural protein existing in both monomeric and homopentameric form. It is a minor component of the virus membrane though it is deemed to be important for many stages including virus infection, replication, dissemination and immune response stimulation. Sequence comparison has shown that this protein is identical to the counterparts of specific Bat and Pangolin coronavirus isolates, even though the Sars-CoV-2 sequence seems to possess specific modifications and characteristics with respect to other Sars CoVs (PMID:32596311). The SARS-CoV-2 envelope protein provide a strategy to assess cross-protection against COVID-19 (PMID: 32446902).

## Notable Publications

Author	Pubmed ID	Journal	Application
Jiahang Ju	36082238	Front Cell Neurosci	IF
Qiwang Xiang	39677672	bioRxiv	WB,IF
Huan Cui	39435149	iScience	IF

## Storage

**Storage:**  
Store at -20°C. Stable for one year after shipment.

**Storage Buffer:**  
PBS with 0.02% sodium azide and 50% glycerol, pH7.3

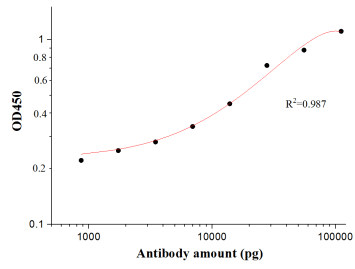
Aliquoting is unnecessary for -20°C storage

**\*\*\* 20ul sizes contain 0.1% BSA**

For technical support and original validation data for this product please contact:  
T: 1 (888) 4PTGLAB (1-888-478-4522) (toll free in USA), or 1(312) 455-8498 (outside USA)  
E: proteintech@ptglab.com  
W: ptglab.com

**This product is exclusively available under Proteintech Group brand and is not available to purchase from any other manufacturer.**

## Selected Validation Data



SARS-CoV-2 Envelope protein Antibody (28904-1-AP) tested by ELISA. SARS-CoV-2 Envelope protein was coated onto microtiter plates at 0.15 µg/well and then incubated with a dilution series of SARS-CoV-2 Envelope protein Antibody (28904-1-AP). Bound antibodies were detected with HRP conjugated anti-Rabbit IgG followed by incubation with HRP Substrate and then measuring the resulting absorbance at 450 nm.