

For Research Use Only

Phospho-MAP3K1 (Thr1400) Polyclonal antibody



Catalog Number: 28844-1-AP

3 Publications

Basic Information

Catalog Number:

28844-1-AP

Size:

100ul, Concentration: 300 ug/ml by Nanodrop;

Source:

Rabbit

Isotype:

IgG

GenBank Accession Number:

NM_005921

GeneID (NCBI):

4214

UNIPROT ID:

Q13233

Full Name:

mitogen-activated protein kinase kinase kinase 1

Calculated MW:

164 kDa

Observed MW:

164 kDa

Purification Method:

Antigen affinity purification

Recommended Dilutions:

WB 1:2000-1:10000

Applications

Tested Applications:

WB, ELISA

Cited Applications:

WB

Species Specificity:

Human

Cited Species:

human, rat

Positive Controls:

WB: Calyculin A treated HeLa cells,

Background Information

MAP3K1, also named as MAPKKK1, MEKK and MEKK1, belongs to the protein kinase superfamily, STE Ser/Thr protein kinase family and MAP kinase kinase kinase subfamily. MAP3K1 is a component of a protein kinase signal transduction cascade. It activates CHUK and IKBKB, the central protein kinases of the NF-kappa-B pathway. MAP3K1 activates the ERK and JNK kinase pathways by phosphorylation of MAP2K1 and MAP2K4. MAP3K1 is activated by autophosphorylation on Thr-1400 and Thr-1412(Uniprot).

Notable Publications

Author	Pubmed ID	Journal	Application
Cong Xiang	39256356	Cell Death Dis	WB
Johannes Morstein	39255801	Cell	WB
Song Liu	37149277	Eur J Pharmacol	WB

Storage

Storage:

Store at -20°C. Stable for one year after shipment.

Storage Buffer:

PBS with 0.02% sodium azide and 50% glycerol pH 7.3.

Aliquoting is unnecessary for -20°C storage

*** 20ul sizes contain 0.1% BSA

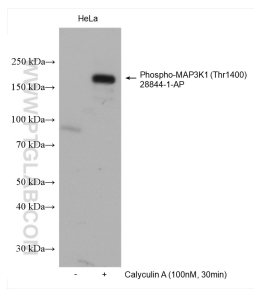
For technical support and original validation data for this product please contact:

T: 1 (888) 4PTGLAB (1-888-478-4522) (toll free in USA), or 1(312) 455-8498 (outside USA)

E: proteintech@ptglab.com
W: ptglab.com

This product is exclusively available under Proteintech Group brand and is not available to purchase from any other manufacturer.

Selected Validation Data



Non-treated and Calyculin A treated HeLa cells were subjected to SDS PAGE followed by western blot with 28844-1-AP (Phospho-MAP3K1 (Thr1400) antibody) at dilution of 1:5000 incubated at room temperature for 1.5 hours.