

For Research Use Only

SIRT6 Polyclonal antibody

Catalog Number: 28677-1-AP

Featured Product



Basic Information

Catalog Number:

28677-1-AP

Size:

150ul, Concentration: 650 µg/ml by Nanodrop;

Source:

Rabbit

Isotype:

IgG

Immunogen Catalog Number:

AG29163

GenBank Accession Number:

BC028220

GeneID (NCBI):

51548

UNIPROT ID:

Q8N6T7

Full Name:

sirtuin (silent mating type information regulation 2 homolog) 6 (S. cerevisiae)

Calculated MW:

39 kDa

Observed MW:

39 kDa

Purification Method:

Antigen affinity purification

Recommended Dilutions:

WB 1:1000-1:6000

IHC 1:250-1:1000

Applications

Tested Applications:

WB, IHC, ELISA

Species Specificity:

human

Note-IHC: suggested antigen retrieval with TE buffer pH 9.0; (*) Alternatively, antigen retrieval may be performed with citrate buffer pH 6.0

Positive Controls:

WB: HeLa cells, HepG2 cells, Jurkat cells, PC-3 cells

IHC: human placenta tissue, mouse liver tissue, rat liver tissue

Background Information

The SIRT6 gene is located at chromosome 19p13.3 and contains 8 exons. The encoded protein has a total length of 355 amino acids. SIRT6 protein is a member of the Sirtuins, which is a class of NAD⁺-dependent protein deacetylases involved in stress resistance and metabolic homeostasis. SIRT6 also plays roles in various tumors as both an oncogene and tumor suppressor gene. A previous study in osteosarcoma reported that SIRT6 regulates the migration and invasion of tumors through the ERK1/2/MMP9 pathway. (PMID: 30675128)

Storage

Storage:

Store at -20°C. Stable for one year after shipment.

Storage Buffer:

PBS with 0.02% sodium azide and 50% glycerol pH 7.3.

Aliquoting is unnecessary for -20°C storage

*** 20ul sizes contain 0.1% BSA

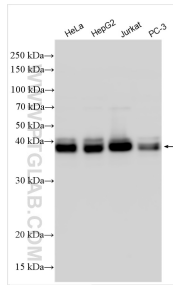
For technical support and original validation data for this product please contact:

T: 1 (888) 4PTGLAB (1-888-478-4522) (toll free in USA), or 1(312) 455-8498 (outside USA)

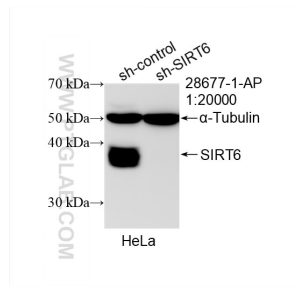
E: proteintech@ptglab.com
W: ptglab.com

This product is exclusively available under Proteintech Group brand and is not available to purchase from any other manufacturer.

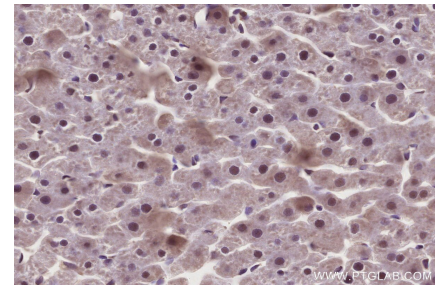
Selected Validation Data



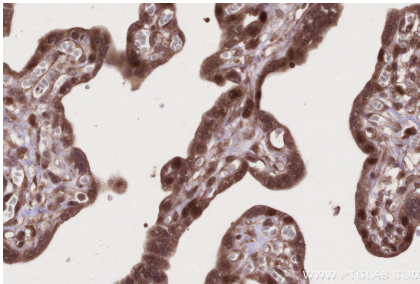
Various lysates were subjected to SDS PAGE followed by western blot with 28677-1-AP (SIRT6 antibody) at dilution of 1:3000 incubated at room temperature for 1.5 hours.



WB result of SIRT6 antibody (28677-1-AP; 1:20000; incubated at room temperature for 1.5 hours) with sh-Control and sh-SIRT6 transfected HeLa cells.



Immunohistochemical analysis of paraffin-embedded rat liver tissue slide using 28677-1-AP (SIRT6 antibody) at dilution of 1:500 (under 40x lens). Heat mediated antigen retrieval with Tris-EDTA buffer (pH 9.0).



Immunohistochemical analysis of paraffin-embedded human placenta tissue slide using 28677-1-AP (SIRT6 antibody) at dilution of 1:500 (under 40x lens). Heat mediated antigen retrieval with Tris-EDTA buffer (pH 9.0).