

For Research Use Only

RFC5 Polyclonal antibody

Catalog Number: 28671-1-AP



Basic Information

Catalog Number: 28671-1-AP	GenBank Accession Number: BC001866	Purification Method: Antigen affinity purification
Size: 150ul , Concentration: 400 µg/ml by Nanodrop;	GeneID (NCBI): 5985	Recommended Dilutions: WB 1:500-1:3000 IF 1:50-1:500
Source: Rabbit	Full Name: replication factor C (activator 1) 5, 36.5kDa	
Isotype: IgG	Calculated MW: 36 aa, 5 kDa	
Immunogen Catalog Number: AG29236		

Applications

Tested Applications: IF, WB, ELISA	Positive Controls:
Species Specificity: Human	WB : HCT 116 cells, U-251 cells, HEK-293T cells IF : HeLa cells,

Background Information

Replication factor C subunit 5 (RFC5), also known as activator 1, can recruit proliferating cell nuclear antigen(PCNA) onto the DNA polymerase S-phase checkpoint complex. In eukaryotes, RFC5 is involved in repairing mismatches, DNA double helix damage, nucleotide excision, and regulating the cell cycle(PMID: 30210909). RFC5 is significantly upregulated in cancer tissues or cells, and its expression is elevated with the cancer progression(PMID: 30214556).

Storage

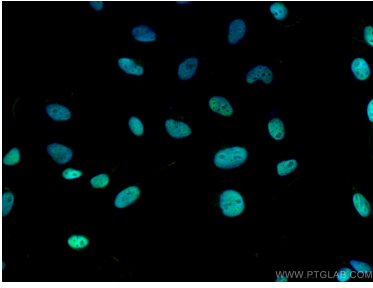
Storage:
Store at -20°C. Stable for one year after shipment.
Storage Buffer:
PBS with 0.02% sodium azide and 50% glycerol pH 7.3.
Aliquoting is unnecessary for -20°C storage

*** 20ul sizes contain 0.1% BSA

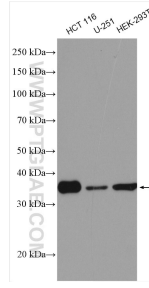
For technical support and original validation data for this product please contact:
T: 1 (888) 4PTGLAB (1-888-478-4522) (toll free in USA), or 1(312) 455-8498 (outside USA)
E: proteintech@ptglab.com
W: ptglab.com

This product is exclusively available under Proteintech Group brand and is not available to purchase from any other manufacturer.

Selected Validation Data



Immunofluorescent analysis of (4% PFA) fixed HeLa cells using RFC5 antibody (28671-1-AP) at dilution of 1:200 and CoraLite®488-Conjugated AffiniPure Goat Anti-Rabbit IgG(H+L).



Various lysates were subjected to SDS PAGE followed by western blot with 28671-1-AP (RFC5 antibody) at dilution of 1:1500 incubated at room temperature for 1.5 hours.