

For Research Use Only

MATN1 Polyclonal antibody

Catalog Number: 28566-1-AP



Basic Information

Catalog Number: 28566-1-AP	GenBank Accession Number: NM_002379	Purification Method: Antigen affinity purification
Size: 150ul , Concentration: 350 ug/ml by Nanodrop;	GeneID (NCBI): 4146	Recommended Dilutions: WB 1:5000-1:50000 IF/ICC 1:200-1:800
Source: Rabbit	UNIPROT ID: P21941	
Isotype: IgG	Full Name: matrilin 1, cartilage matrix protein	
Immunogen Catalog Number: AG29386	Calculated MW: 54 kDa	
	Observed MW: 54 kDa	

Applications

Tested Applications: WB, IF/ICC, ELISA	Positive Controls: WB : pig cartilage tissue, IF/ICC : HeLa cells,
Species Specificity: pig, human	

Background Information

MATN1 (matrilin 1), also known as CMP. It is expected to be located in extracellular space, the protein is mainly expressed in cartilage tissue and retina tissue. Also, the protein is a member of von Willebrand factor A domain containing protein family. This family of proteins are thought to be involved in the formation of filamentous networks in the extracellular matrices of various tissues. Mutations of this gene have been associated with variety of inherited chondrodysplasias. It is reported that COMP and matrilin-1 elute together in the gel filtration of cartilage extracts and can be co-immunoprecipitated with the presence of calcium (PMID: 15075323). The calculated molecular weight of MATN1 is 54 kDa.

Storage

Storage:
Store at -20°C. Stable for one year after shipment.
Storage Buffer:
PBS with 0.02% sodium azide and 50% glycerol pH 7.3.
Aliquoting is unnecessary for -20°C storage

*** 20ul sizes contain 0.1% BSA

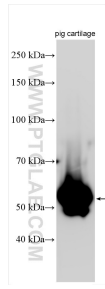
For technical support and original validation data for this product please contact:

T: 1 (888) 4PTGLAB (1-888-478-4522) (toll free in USA), or 1(312) 455-8498 (outside USA)

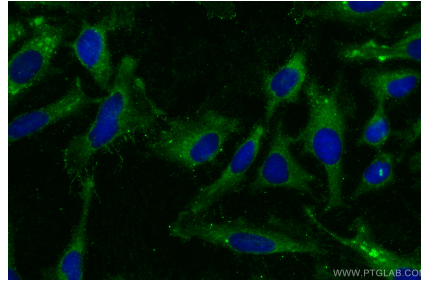
E: proteintech@ptglab.com
W: ptglab.com

This product is exclusively available under Proteintech Group brand and is not available to purchase from any other manufacturer.

Selected Validation Data



Various lysates were subjected to SDS PAGE followed by western blot with 28566-1-AP (MATN1 antibody) at dilution of 1:10000 incubated at room temperature for 1.5 hours.



Immunofluorescent analysis of (-20°C Methanol) fixed HeLa cells using MATN1 antibody (28566-1-AP) at dilution of 1:400 and CoraLite® 488-Conjugated Goat Anti-Rabbit IgG(H+L).