

For Research Use Only

KAT2A/GCN5 Polyclonal antibody

Catalog Number: 28390-1-AP

Featured Product



Basic Information

Catalog Number:

28390-1-AP

Size:

150ul , Concentration: 1000 µg/ml by Nanodrop;

Source:

Rabbit

Isotype:

IgG

Immunogen Catalog Number:

AG29005

GenBank Accession Number:

BC032743

GeneID (NCBI):

2648

UNIPROT ID:

Q92830

Full Name:

K(lysine) acetyltransferase 2A

Calculated MW:

94 kDa

Observed MW:

94 kDa

Purification Method:

Antigen affinity purification

Recommended Dilutions:

WB 1:2000-1:16000

IP 0.5-4.0 ug for 1.0-3.0 mg of total protein lysate

IF/ICC 1:50-1:500

Applications

Tested Applications:

WB, IF/ICC, IP, ELISA

Species Specificity:

human

Positive Controls:

WB : HEK-293 cells, HUVEC cells, HeLa cells, LNCaP cells, MCF-7 cells

IP : LNCaP cells, hTERT-RPE1 cells

IF/ICC : HeLa cells,

Background Information

GCN5, encoded by KAT2A, is a member of nuclear A-type histone acetyltransferase (HAT) which has direct impact on gene transcription. Additionally, GCN5 has roles in cell cycle regulation, DNA replication, and DNA repair, highlighting it as key player in the maintenance of genome stability. GCN5 is a coactivator of c-MYC oncogene protein and has oncogenic roles in various cancers.

Storage

Storage:

Store at -20°C. Stable for one year after shipment.

Storage Buffer:

PBS with 0.02% sodium azide and 50% glycerol pH 7.3.

Aliquoting is unnecessary for -20°C storage

*** 20ul sizes contain 0.1% BSA

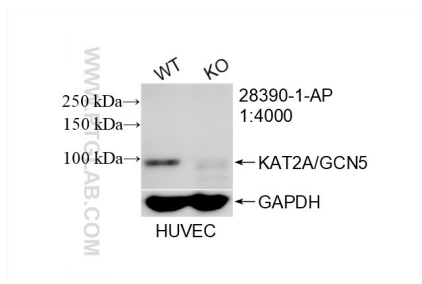
For technical support and original validation data for this product please contact:

T: 1 (888) 4PTGLAB (1-888-478-4522) (toll free in USA), or 1(312) 455-8498 (outside USA)

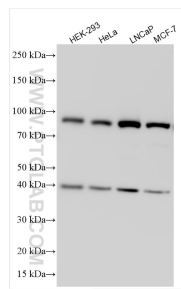
E: proteintech@ptglab.com
W: ptglab.com

This product is exclusively available under Proteintech Group brand and is not available to purchase from any other manufacturer.

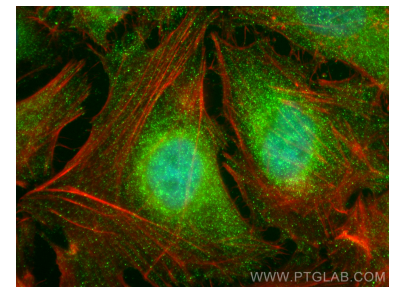
Selected Validation Data



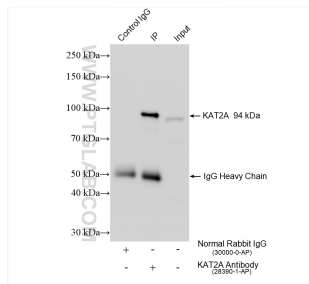
WB result of KAT2A/GCN5 antibody (28390-1-AP; 1:4000; room temperature for 1.5 hours) with wild-type and KAT2A/GCN5 knockout HUVEC cells.



Various lysates were subjected to SDS PAGE followed by western blot with 28390-1-AP (KAT2A/GCN5 antibody) at dilution of 1:8000 incubated at room temperature for 1.5 hours.



Immunofluorescent analysis of (4% PFA) fixed HeLa cells using KAT2A/GCN5 antibody (28390-1-AP) at dilution of 1:200 and CoraLite@488-Conjugated AffiniPure Goat Anti-Rabbit IgG(H+L) (SA00013-2), CL594-Phalloidin (red).



IP result of anti-KAT2A/GCN5 (IP:28390-1-AP, 4ug; Detection:28390-1-AP 1:6000) with LNCaP cells lysate 1200 ug.