

For Research Use Only

CARD14 Polyclonal antibody

Catalog Number: 28373-1-AP



Basic Information

Catalog Number: 28373-1-AP	GenBank Accession Number: BC018142	Purification Method: Antigen affinity purification
Size: 150ul , Concentration: 600 ug/ml by Nanodrop;	GeneID (NCBI): 79092	Recommended Dilutions: WB 1:500-1:2000
Source: Rabbit	UNIPROT ID: Q9BXL6	
Isotype: IgG	Full Name: caspase recruitment domain family, member 14	
Immunogen Catalog Number: AG28969	Calculated MW: 113 kDa	
	Observed MW: 110-140 kDa	

Applications

Tested Applications: WB, ELISA	Positive Controls: WB : EC109 cells,
Species Specificity: Human	

Background Information

CARD14, also known as CARMA2, is closely related to CARD9, CARD10, and CARD11, which upon activation, each form an oligomeric CBM signaling complex with B-cell lymphoma 10 (BCL10) and mucosa-associated lymphoid tissue lymphoma translocation protein 1 (MALT1). It is predominantly expressed in epithelial cells of esophagus, skin, and mucosal tissues, although some isoforms were also shown to be expressed in hematopoietic cell lines. (PMID: 36009554, PMID: 32343482)

Storage

Storage:
Store at -20°C. Stable for one year after shipment.
Storage Buffer:
PBS with 0.02% sodium azide and 50% glycerol pH 7.3.
Aliquoting is unnecessary for -20°C storage

*** 20ul sizes contain 0.1% BSA

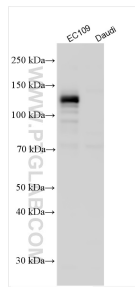
For technical support and original validation data for this product please contact:

T: 1 (888) 4PTGLAB (1-888-478-4522) (toll free in USA), or 1(312) 455-8498 (outside USA)

E: proteintech@ptglab.com
W: ptglab.com

This product is exclusively available under Proteintech Group brand and is not available to purchase from any other manufacturer.

Selected Validation Data



Various lysates were subjected to SDS PAGE followed by western blot with 28373-1-AP (CARD14 antibody) at dilution of 1:1000 incubated at room temperature for 1.5 hours. Daudi cells were used as a negative control.