

For Research Use Only

KDM5B Polyclonal antibody

Catalog Number: 28346-1-AP



Basic Information

Catalog Number:

28346-1-AP

Size:

150ul, Concentration: 600 ug/ml by Nanodrop;

Source:

Rabbit

Isotype:

IgG

Immunogen Catalog Number:

AG28821

GenBank Accession Number:

NM_001314042

GeneID (NCBI):

10765

UNIPROT ID:

Q9UGL1

Full Name:

lysine (K)-specific demethylase 5B

Calculated MW:

176 kDa

Observed MW:

160-180 kDa

Purification Method:

Antigen affinity purification

Recommended Dilutions:

WB 1:500-1:2000

Applications

Tested Applications:

WB, ELISA

Species Specificity:

human

Positive Controls:

WB : A375 cells, HepG2 cells, MCF-7 cells

Storage

Storage:

Store at -20°C. Stable for one year after shipment.

Storage Buffer:

PBS with 0.02% sodium azide and 50% glycerol pH 7.3.

Aliquoting is unnecessary for -20°C storage

*** 20ul sizes contain 0.1% BSA

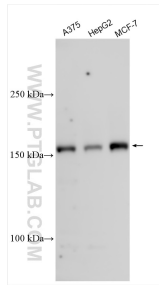
For technical support and original validation data for this product please contact:

T: 1 (888) 4PTGLAB (1-888-478-4522) (toll free in USA), or 1(312) 455-8498 (outside USA)

E: proteintech@ptglab.com
W: ptglab.com

This product is exclusively available under Proteintech Group brand and is not available to purchase from any other manufacturer.

Selected Validation Data



Various lysates were subjected to SDS PAGE followed by western blot with 28346-1-AP (KDM5B antibody) at dilution of 1:1000 incubated at room temperature for 1.5 hours.