

For Research Use Only

# ADRB1 Polyclonal antibody, PBS Only

Catalog Number: 28323-1-PBS



## Basic Information

<b>Catalog Number:</b> 28323-1-PBS	<b>GenBank Accession Number:</b> NM_000684	<b>Purification Method:</b> Antigen affinity purification
<b>Size:</b> 100ug, Concentration: 1 mg/ml by Nanodrop;	<b>GeneID (NCBI):</b> 153	
<b>Source:</b> Rabbit	<b>UNIPROT ID:</b> P08588	
<b>Isotype:</b> IgG	<b>Full Name:</b> adrenergic, beta-1-, receptor	
<b>Immunogen Catalog Number:</b> AG28223	<b>Calculated MW:</b> 51 kDa	
	<b>Observed MW:</b> 49 kDa	

## Applications

**Tested Applications:**  
WB, IHC, Indirect ELISA

**Species Specificity:**  
human, mouse, rat

## Background Information

ADRB1 (adrenergic receptor beta 1), a member of the G protein-coupled receptor (GPCR) superfamily, responds to catecholamine stimulation. ADRB1 is the predominant subtype expressed in the heart and mediates increases in inotropy and chronotropy when stimulated. ADRB1 mediates a wide range of cardiovascular physiological responses and has been of great interest to researchers as a therapeutic target for cardiovascular diseases. Moreover, three subtypes of ADRBs (ADRB1, ADRB2, and ADRB3) are encoded by three separate genes (PMID:16636683; 33372534; 33593484).

## Storage

**Storage:**  
Store at -80°C.

**Storage Buffer:**  
PBS Only

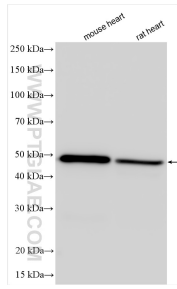
For technical support and original validation data for this product please contact:

T: 1 (888) 4PTGLAB (1-888-478-4522) (toll free in USA), or 1(312) 455-8498 (outside USA)

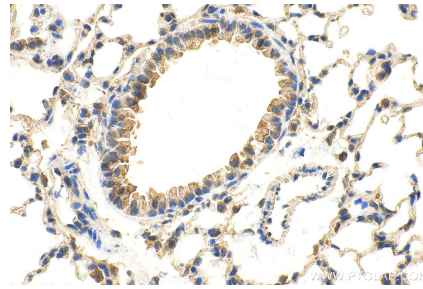
E: [proteintech@ptglab.com](mailto:proteintech@ptglab.com)  
W: [ptglab.com](http://ptglab.com)

**This product is exclusively available under Proteintech Group brand and is not available to purchase from any other manufacturer.**

## Selected Validation Data



Various lysates were subjected to SDS PAGE followed by western blot with 28323-1-AP (ADRB1 antibody) at dilution of 1:2000 incubated at room temperature for 1.5 hours. This data was developed using the same antibody clone with 28323-1-PBS in a different storage buffer formulation.



Immunohistochemical analysis of paraffin-embedded mouse lung tissue slide using 28323-1-AP (ADRB1 antibody) at dilution of 1:200 (under 40x lens). Heat mediated antigen retrieval with Tris-EDTA buffer (pH 9.0). This data was developed using the same antibody clone with 28323-1-PBS in a different storage buffer formulation.