

For Research Use Only

# Mouse p21 Polyclonal antibody, PBS Only

Catalog Number: 28248-1-PBS



## Basic Information

<b>Catalog Number:</b> 28248-1-PBS	<b>GenBank Accession Number:</b> NM_001111099	<b>Purification Method:</b> Antigen affinity purification
<b>Size:</b> 100ug, Concentration: 1 mg/ml by Nanodrop;	<b>GeneID (NCBI):</b> 12575	
<b>Source:</b> Rabbit	<b>UNIPROT ID:</b> P39689	
<b>Isotype:</b> IgG	<b>Full Name:</b> cyclin-dependent kinase inhibitor 1A (P21)	
<b>Immunogen Catalog Number:</b> AG28394	<b>Calculated MW:</b> 18 kDa	
	<b>Observed MW:</b> 18 kDa	

## Applications

**Tested Applications:**  
WB, IF/ICC, IP, Indirect ELISA

**Species Specificity:**  
mouse, rat

## Background Information

CDKN1A (p21, CIP1, WAF1) is a cyclin-dependent kinase inhibitor. CDKN1A binds to and inhibits the activity of cyclin-CDK2 or -CDK4 complexes, and thus functions as a regulator of cell cycle progression at the G1 phase. The expression of CDKN1A is induced by wild-type but not mutant p53 protein, through which CDKN1A mediates the p53-dependent cell cycle G1 phase arrest in response to a variety of stress stimuli. CDKN1A can interact with proliferating cell nuclear antigen (PCNA), and plays a regulatory role in S phase DNA replication and DNA damage repair. CDKN1A was reported to be specifically cleaved by CASP3-like caspases, which thus leads to a dramatic activation of CDK2, and may be instrumental in the execution of apoptosis following caspase activation.

## Storage

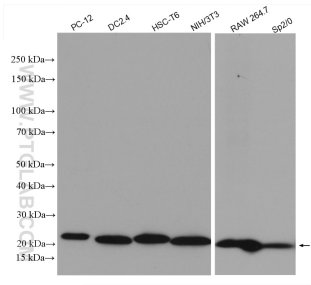
**Storage:**  
Store at -80°C.

**Storage Buffer:**  
PBS Only

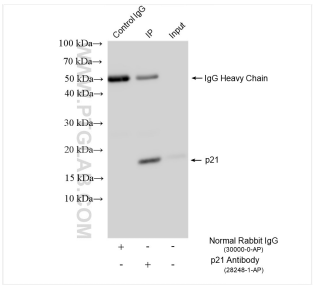
For technical support and original validation data for this product please contact:  
T: 1 (888) 4PTGLAB (1-888-478-4522) (toll free in USA), or 1(312) 455-8498 (outside USA)  
E: [proteintech@ptglab.com](mailto:proteintech@ptglab.com)  
W: [ptglab.com](http://ptglab.com)

This product is exclusively available under Proteintech Group brand and is not available to purchase from any other manufacturer.

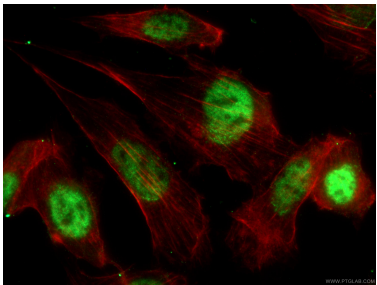
## Selected Validation Data



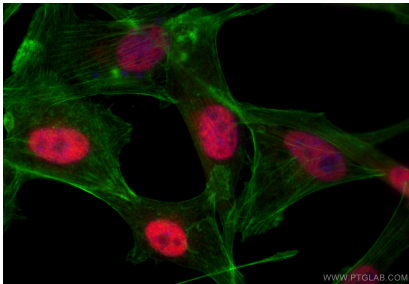
Various lysates were subjected to SDS PAGE followed by western blot with 28248-1-AP (p21 antibody) at dilution of 1:1000 incubated at room temperature for 1.5 hours. This data was developed using the same antibody clone with 28248-1-PBS in a different storage buffer formulation.



IP result of anti-p21 (IP:28248-1-AP, 4ug; Detection:28248-1-AP 1:1000) with NIH/3T3 cells lysate 1920 ug. This data was developed using the same antibody clone with 28248-1-PBS in a different storage buffer formulation.



Immunofluorescent analysis of (-20°C Ethanol) fixed NIH/3T3 cells using 28248-1-AP (p21 antibody), at dilution of 1:200 and CoraLite® 488-Conjugated AffiniPure Goat Anti-Rabbit IgG(H+L). F-actin is stained using CL555-phalloidin (red). This data was developed using the same antibody clone with 28248-1-PBS in a different storage buffer formulation.



Immunofluorescent analysis of (4% PFA) fixed NIH/3T3 cells using p21 antibody (28248-1-AP) at dilution of 1:200 and CoraLite® 594-Conjugated Goat Anti-Rabbit IgG(H+L) (SA00013-4), CL488-phalloidin (green). This data was developed using the same antibody clone with 28248-1-PBS in a different storage buffer formulation.