

For Research Use Only

SREBF2 Polyclonal antibody

Catalog Number: 28212-1-AP

Featured Product

41 Publications



Basic Information

Catalog Number: 28212-1-AP	GenBank Accession Number: BC056158	Purification Method: Antigen affinity purification
Size: 150ul , Concentration: 900 µg/ml by Nanodrop;	GeneID (NCBI): 6721	Recommended Dilutions: WB 1:1000-1:8000
Source: Rabbit	Full Name: sterol regulatory element binding transcription factor 2	
Isotype: IgG	Calculated MW: 124 kDa	
Immunogen Catalog Number: AG28205	Observed MW: 73-75 kDa, 120-130 kDa	

Applications

Tested Applications: WB, ELISA	Positive Controls: WB : HUVEC cells, HeLa cells, HepG2 cells
Cited Applications: IHC, WB	
Species Specificity: Human	
Cited Species: human, mouse, hamster	

Background Information

SREBF2, also named as BHLHD2, is a 1141 amino acid protein, which contains 1 bHLH domain and belongs to the SREBP family. SREBF2 localizes in the endoplasmic reticulum membrane and is ubiquitously expressed in adult and fetal tissues. SREBF2 as a transcriptional activator is required for lipid homeostasis. SREBF2 expression is dynamically regulated in response to nutritional and hormonal cues. SREBF2 exists two isoform with molecular weight 124 kDa and 73 kDa.

Notable Publications

Author	Pubmed ID	Journal	Application
Shaofan Hu	36174386	Redox Biol	WB
Mingyue Tao	34518524	Cell Death Dis	WB
Hui-Yu Luo	36286043	Curr Issues Mol Biol	WB

Storage

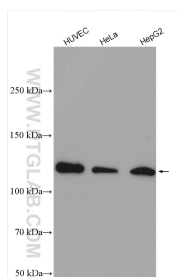
Storage:
Store at -20°C. Stable for one year after shipment.
Storage Buffer:
PBS with 0.02% sodium azide and 50% glycerol pH 7.3.
Aliquoting is unnecessary for -20°C storage

*** 20ul sizes contain 0.1% BSA

For technical support and original validation data for this product please contact:
T: 1 (888) 4PTGLAB (1-888-478-4522) (toll free in USA), or 1(312) 455-8498 (outside USA)
E: proteintech@ptglab.com
W: ptglab.com

This product is exclusively available under Proteintech Group brand and is not available to purchase from any other manufacturer.

Selected Validation Data



Various lysates were subjected to SDS PAGE followed by western blot with 28212-1-AP (SREBF2 antibody) at dilution of 1:4000 incubated at room temperature for 1.5 hours.