

For Research Use Only

# DCHS1 Polyclonal antibody

Catalog Number: 28144-1-AP



## Basic Information

<b>Catalog Number:</b> 28144-1-AP	<b>GenBank Accession Number:</b> NM_003737	<b>Purification Method:</b> Antigen affinity purification
<b>Size:</b> 150ul , Concentration: 1000 ug/ml by Nanodrop;	<b>GeneID (NCBI):</b> 8642	<b>Recommended Dilutions:</b> WB 1:500-1:1000
<b>Source:</b> Rabbit	<b>Full Name:</b> dachous 1 (Drosophila)	
<b>Isotype:</b> IgG	<b>Calculated MW:</b> 346 kDa	
<b>Immunogen Catalog Number:</b> AG27226	<b>Observed MW:</b> ~350 kDa	

## Applications

<b>Tested Applications:</b> WB, ELISA	<b>Positive Controls:</b> WB : mouse brain tissue,
<b>Species Specificity:</b> Human, mouse	

## Background Information

DCHS1 is one of two known pathogenic genes associated with mitral valve prolapse (MVP), a common cardiac valve disease (PMID: 33225636). Dchs1 and Fat4 function as a ligand-receptor pair during murine development and these genes are required in multiple organs (PMID: 21303848).

## Storage

**Storage:**  
Store at -20°C. Stable for one year after shipment.  
**Storage Buffer:**  
PBS with 0.02% sodium azide and 50% glycerol pH 7.3.  
Aliquoting is unnecessary for -20°C storage

\*\*\* 20ul sizes contain 0.1% BSA

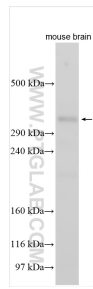
For technical support and original validation data for this product please contact:

T: 1 (888) 4PTGLAB (1-888-478-4522) (toll free in USA), or 1(312) 455-8498 (outside USA)

E: [proteintech@ptglab.com](mailto:proteintech@ptglab.com)  
W: [ptglab.com](http://ptglab.com)

This product is exclusively available under Proteintech Group brand and is not available to purchase from any other manufacturer.

## Selected Validation Data



mouse brain tissue were subjected to SDS PAGE followed by western blot with 28144-1-AP (DCHS1 antibody) at dilution of 1:500 incubated at room temperature for 1.5 hours.