

# KIAA2013 Polyclonal antibody

Catalog Number: 27886-1-AP

## Basic Information

<b>Catalog Number:</b> 27886-1-AP	<b>GenBank Accession Number:</b> BC035033	<b>Purification Method:</b> Antigen affinity purification
<b>Size:</b> 150ul , Concentration: 650 µg/ml by Nanodrop and 367 µg/ml by Bradford method using BSA as the standard;	<b>GeneID (NCBI):</b> 90231	<b>Recommended Dilutions:</b> WB 1:500-1:3000
<b>Source:</b> Rabbit	<b>Full Name:</b> KIAA2013	
<b>Isotype:</b> IgG	<b>Observed MW:</b> 65 kDa	
<b>Immunogen Catalog Number:</b> AG27379		

## Applications

<b>Tested Applications:</b> WB, ELISA	<b>Positive Controls:</b> WB : HEK-293 cells, U2OS cells, mouse kidney tissue
<b>Species Specificity:</b> Human, mouse	

## Background Information

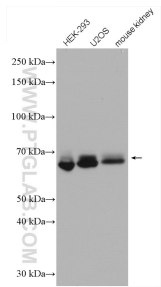
KIAA2013, also known as Q8IYS2 or MGC33867, is a single-pass transmembrane protein encoded by the KIAA2013 gene in humans. KIAA2013 has been found to play a role in the Endocannabinoid system. This system is made up of cannabinoid receptors 1 and 2 (CB1 and CB2) as well as the various ligands and enzymes that interact. The protein KIAA2013 has been found to be expressed within CB2 expressing cells. Both cannabinoid receptors are labeled as class A G-Protein Coupled Receptors, and CB2 is highly expressed within the human spleen and leukocytes. CB2, and by extension KIAA2013, are therefore targets of interest for therapeutic studies looking into diseases such as inflammatory bowel disease and rheumatoid arthritis(PMID:31616248 34752341).

## Storage

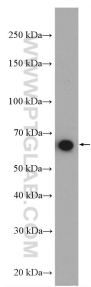
**Storage:**  
Store at -20°C. Stable for one year after shipment.  
**Storage Buffer:**  
PBS with 0.02% sodium azide and 50% glycerol pH 7.3.  
Aliquoting is unnecessary for -20°C storage

\*\*\* 20ul sizes contain 0.1% BSA

Selected Validation Data



Various lysates were subjected to SDS PAGE followed by western blot with 27886-1-AP (KIAA2013 antibody) at dilution of 1:2000 incubated at room temperature for 1.5 hours.



HEK-293 cells were subjected to SDS PAGE followed by western blot with 27886-1-AP (KIAA2013 antibody) at dilution of 1:1500 incubated at room temperature for 1.5 hours.