

For Research Use Only

SASH1 Polyclonal antibody

Catalog Number: 27689-1-AP



Basic Information

Catalog Number: 27689-1-AP	GenBank Accession Number: NML_015278	Purification Method: Antigen affinity purification
Size: 150ul , Concentration: 400 ug/ml by Nanodrop;	GeneID (NCBI): 23328	Recommended Dilutions: WB 1:500-1:2000 IF/ICC 1:50-1:500
Source: Rabbit	UNIPROT ID: O94885	
Isotype: IgG	Full Name: SAM and SH3 domain containing 1	
Immunogen Catalog Number: AG26771	Calculated MW: 137 kDa	
	Observed MW: 170 kDa	

Applications

Tested Applications: WB, IF/ICC, ELISA	Positive Controls: WB : SKOV-3 cells, U-251 cells, U-87 MG cells
Species Specificity: human	IF/ICC : U2OS cells,

Background Information

SAM and SH3 domain-containing protein 1 (SASH1, also known as KIAA0790 and PEPE1) is a multidomain protein implicated in various cellular processes, including cell adhesion, migration, and apoptosis. It has been identified as a novel Eph receptor-binding partner through SAM-SAM domain interactions, which are critical for the recruitment and binding of downstream molecules in the Eph signaling pathway (PMID: 37619706). SASH1 is also known to regulate signaling through focal adhesion kinase (FAK) and AKT/PI3K and promote apoptosis. Mutations in SASH1 have been associated with cancers, and it is suggested as a potential therapeutic target in non-small cell lung cancer (PMID: 33122723).

Storage

Storage:
Store at -20°C. Stable for one year after shipment.
Storage Buffer:
PBS with 0.02% sodium azide and 50% glycerol pH 7.3.
Aliquoting is unnecessary for -20°C storage

*** 20ul sizes contain 0.1% BSA

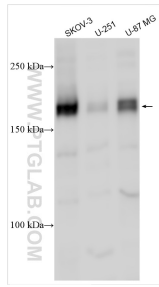
For technical support and original validation data for this product please contact:

T: 1 (888) 4PTGLAB (1-888-478-4522) (toll free in USA), or 1(312) 455-8498 (outside USA)

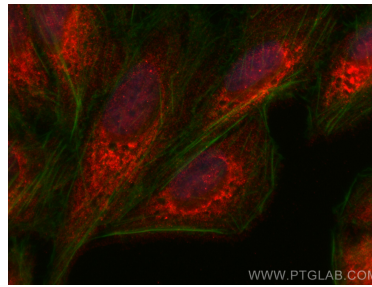
E: proteintech@ptglab.com
W: ptglab.com

This product is exclusively available under Proteintech Group brand and is not available to purchase from any other manufacturer.

Selected Validation Data



Various lysates were subjected to SDS PAGE followed by western blot with 27689-1-AP (SASH1 antibody) at dilution of 1:1000 incubated at room temperature for 1.5 hours.



Immunofluorescent analysis of (4% PFA) fixed U2OS cells using SASH1 antibody (27689-1-AP) at dilution of 1:200 and CoraLite®594-Conjugated Goat Anti-Rabbit IgG(H+L) (SA00013-4), CL488-Phalloidin (green).