

For Research Use Only

EMC7/C15orf24 Polyclonal antibody



Catalog Number: 27550-1-AP

3 Publications

Basic Information

Catalog Number: 27550-1-AP	GenBank Accession Number: BC104934	Purification Method: Antigen affinity purification
Size: 150ul , Concentration: 650 µg/ml by Nanodrop and 333 µg/ml by Bradford method using BSA as the standard;	GeneID (NCBI): 56851	Recommended Dilutions: WB 1:1000-1:6000
Source: Rabbit	UNIPROT ID: Q9NPA0	
Isotype: IgG	Full Name: chromosome 15 open reading frame 24	
Immunogen Catalog Number: AG26784	Observed MW: 20-26 kDa	

Applications

Tested Applications: WB, ELISA	Positive Controls: WB : HeLa cells, HepG2 cells
Cited Applications: WB	
Species Specificity: Human	
Cited Species: human	

Background Information

The mammalian ER membrane complex (EMC) is composed of 10 subunits, EMC 1-10. Endoplasmic reticulum membrane protein complex subunit 7(EMC7, also named C15orf24) is part of the endoplasmic reticulum membrane protein complex (EMC) that enables the energy-independent insertion into endoplasmic reticulum membranes of newly synthesized membrane proteins.

Notable Publications

Author	Pubmed ID	Journal	Application
John P O'Donnell	32459176	Elife	WB
Katharine R Page	38076791	bioRxiv	WB
Tino Pleiner	37199759	J Cell Biol	WB

Storage

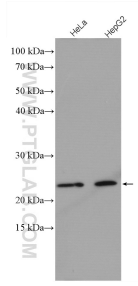
Storage:
Store at -20°C. Stable for one year after shipment.
Storage Buffer:
PBS with 0.02% sodium azide and 50% glycerol pH 7.3.
Aliquoting is unnecessary for -20°C storage

*** 20ul sizes contain 0.1% BSA

For technical support and original validation data for this product please contact:
T: 1 (888) 4PTGLAB (1-888-478-4522) (toll free in USA), or 1(312) 455-8498 (outside USA)
E: proteintech@ptglab.com
W: ptglab.com

This product is exclusively available under Proteintech Group brand and is not available to purchase from any other manufacturer.

Selected Validation Data



Various lysates were subjected to SDS PAGE followed by western blot with 27550-1-AP (C15orf24 antibody) at dilution of 1:3000 incubated at room temperature for 1.5 hours.