

For Research Use Only

LARP6 Polyclonal antibody

Catalog Number: 27514-1-AP



Basic Information

Catalog Number: 27514-1-AP	GenBank Accession Number: BC009446	Purification Method: Antigen affinity purification
Size: 150ul , Concentration: 400 ug/ml by Nanodrop;	GeneID (NCBI): 55323	Recommended Dilutions: WB 1:1000-1:4000
Source: Rabbit	UNIPROT ID: Q9BRS8	
Isotype: IgG	Full Name: La ribonucleoprotein domain family, member 6	
Immunogen Catalog Number: AG24354	Calculated MW: 491 aa, 55 kDa	
	Observed MW: 70 kDa	

Applications

Tested Applications: WB, ELISA	Positive Controls: WB : Jurkat cells, mouse brain tissue
Species Specificity: human, mouse, rat	

Background Information

La-related protein 6 (LARP6), also known as Acheron or La ribonucleoprotein domain family member 6, is a protein encoded by the LARP6 gene in humans. It is a member of the LARP superfamily of RNA-binding proteins, which are post-transcriptional regulators. It is a phosphoprotein and eight phosphorylation sites have been identified. Six of these phosphorylation sites reside in the C-terminal domain of LARP6 (CTER). These sites are Ser348, Ser396, Ser409, Ser421, Ser447, and Ser451 (PMID: 27011170).

Storage

Storage:
Store at -20°C. Stable for one year after shipment.
Storage Buffer:
PBS with 0.02% sodium azide and 50% glycerol pH 7.3.
Aliquoting is unnecessary for -20°C storage

*** 20ul sizes contain 0.1% BSA

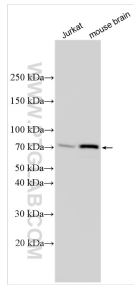
For technical support and original validation data for this product please contact:

T: 1 (888) 4PTGLAB (1-888-478-4522) (toll free in USA), or 1(312) 455-8498 (outside USA)

E: proteintech@ptglab.com
W: ptglab.com

This product is exclusively available under Proteintech Group brand and is not available to purchase from any other manufacturer.

Selected Validation Data



Various lysates were subjected to SDS PAGE followed by western blot with 27514-1-AP (LARP6 antibody) at dilution of 1:2000 incubated at room temperature for 1.5 hours.