

For Research Use Only

Reticulocalbin 3 Polyclonal antibody

Catalog Number: 27497-1-AP



Basic Information

| | | |
|--|---|--|
| Catalog Number: 27497-1-AP | GenBank Accession Number: BC013436 | Purification Method: Antigen affinity purification |
| Size: 150ul , Concentration: 400 µg/ml by Nanodrop and 267 µg/ml by Bradford method using BSA as the standard; | GeneID (NCBI): 57333 | Recommended Dilutions: WB 1:500-1:2000 |
| Source: Rabbit | Full Name: reticulocalbin 3, EF-hand calcium binding domain | |
| Isotype: IgG | Calculated MW: 37 kDa | |
| Immunogen Catalog Number: AG26569 | Observed MW: 45 kDa | |

Applications

| | |
|--|---|
| Tested Applications: WB, ELISA | Positive Controls: WB : HeLa cells, U2OS cells, K-562 cells |
| Species Specificity: Human | |

Background Information

Storage

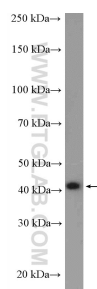
Storage:
Store at -20°C. Stable for one year after shipment.
Storage Buffer:
PBS with 0.02% sodium azide and 50% glycerol pH 7.3.
Aliquoting is unnecessary for -20°C storage

*** 20ul sizes contain 0.1% BSA

For technical support and original validation data for this product please contact:
T: 1 (888) 4PTGLAB (1-888-478-4522) (toll free in USA), or 1(312) 455-8498 (outside USA)
E: proteintech@ptglab.com
W: ptglab.com

This product is exclusively available under Proteintech Group brand and is not available to purchase from any other manufacturer.

Selected Validation Data



HeLa cells were subjected to SDS PAGE followed by western blot with 27497-1-AP (Reticulocalbin 3 antibody) at dilution of 1:1000 incubated at room temperature for 1.5 hours.