

For Research Use Only

HEK 293 cells Polyclonal antibody

Catalog Number: 27347-1-AP **1 Publications**



Basic Information

Catalog Number: 27347-1-AP	GenBank Accession Number: GeneID (NCBI):	Purification Method: Protein A purification
Size: 150ul , Concentration: 3500 µg/ml by Nanodrop;	Full Name:	Recommended Dilutions: IF 1:500-1:2000
Source: Rabbit		
Isotype: IgG		

Applications

Tested Applications: IF,ELISA	Positive Controls: IF : HEK-293 cells,
Cited Applications: WB	
Species Specificity: human	
Cited Species: human	

Background Information

Human Embryonic Kidney 293 cells, also often referred to as HEK 293, 293 cells, or less precisely as HEK cells are a specific cell line originally derived from human embryonic kidney cells grown in tissue culture. HEK 293 cells were generated in early 70s by transformation of cultures of normal human embryonic kidney cells with sheared adenovirus 5 DNA in Alex Van der Eb's laboratory in Leiden, Holland. This antibody is designed to detect the protein of the HEK293 cells.

Notable Publications

Author	Pubmed ID	Journal	Application
Chiaki Sakuma	33157142	Int J Biol Macromol	WB

Storage

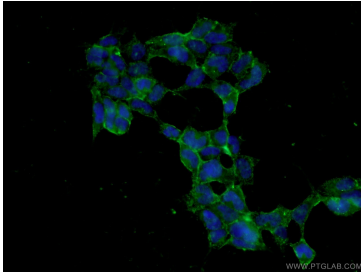
Storage:
Store at -20°C. Stable for one year after shipment.
Storage Buffer:
PBS with 0.02% sodium azide and 50% glycerol pH 7.3.
Aliquoting is unnecessary for -20°C storage

*** 20ul sizes contain 0.1% BSA

For technical support and original validation data for this product please contact:
T: 1 (888) 4PTGLAB (1-888-478-4522) (toll free in USA), or 1(312) 455-8498 (outside USA)
E: proteintech@ptglab.com
W: ptglab.com

This product is exclusively available under Proteintech Group brand and is not available to purchase from any other manufacturer.

Selected Validation Data



Immunofluorescent analysis of (4% PFA) fixed HEK-293 cells using 27347-1-AP (HEK 293 cells antibody) at dilution of 1:1000 and Alexa Fluor 488-conjugated AffiniPure Goat Anti-Rabbit IgG(H+L).