

For Research Use Only

# Inhibin alpha Polyclonal antibody, PBS Only

Catalog Number: 27331-1-PBS



## Basic Information

<b>Catalog Number:</b> 27331-1-PBS	<b>GenBank Accession Number:</b> BC006391	<b>Purification Method:</b> Antigen affinity purification
<b>Size:</b> 100ug, Concentration: 1 mg/ml by Nanodrop;	<b>GeneID (NCBI):</b> 3623	
<b>Source:</b> Rabbit	<b>UNIPROT ID:</b> P05111	
<b>Isotype:</b> IgG	<b>Full Name:</b> inhibin, alpha	
<b>Immunogen Catalog Number:</b> AG25999	<b>Calculated MW:</b> 40 kDa	
	<b>Observed MW:</b> 40 kDa	

## Applications

**Tested Applications:**  
WB, IHC, Indirect ELISA

**Species Specificity:**  
human, mouse, rat

## Background Information

Inhibin, a heterodimeric member of the TGF family, consists of an alpha ( $\alpha$ ) subunit (coded by INHA) and a beta ( $\beta$ ) subunit, which combine to produce either inhibin A ( $\alpha\beta A$ ) or inhibin B ( $\alpha\beta B$ ). Inhibin complexes negatively regulate follicle stimulating hormone secretion from the pituitary gland. Inhibins have also been implicated in regulating numerous cellular processes including cell proliferation, apoptosis, immune response and hormone secretion.

## Storage

**Storage:**  
Store at  $-80^{\circ}\text{C}$ .

**Storage Buffer:**  
PBS Only

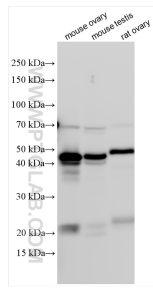
For technical support and original validation data for this product please contact:

T: 1 (888) 4PTGLAB (1-888-478-4522) (toll free in USA), or 1(312) 455-8498 (outside USA)

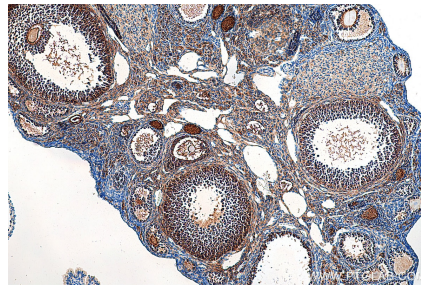
E: [proteintech@ptglab.com](mailto:proteintech@ptglab.com)  
W: [ptglab.com](http://ptglab.com)

**This product is exclusively available under Proteintech Group brand and is not available to purchase from any other manufacturer.**

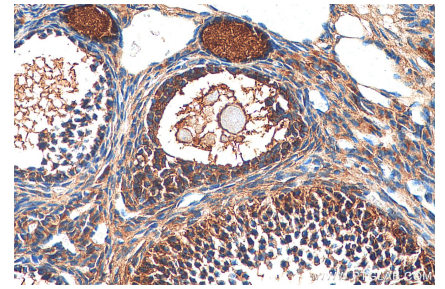
## Selected Validation Data



Various lysates were subjected to SDS PAGE followed by western blot with 27331-1-AP (Inhibin alpha antibody) at dilution of 1:6000 incubated at room temperature for 1.5 hours. This data was developed using the same antibody clone with 27331-1-PBS in a different storage buffer formulation.



Immunohistochemical analysis of paraffin-embedded mouse ovary tissue slide using 27331-1-AP (Inhibin alpha antibody) at dilution of 1:200 (under 10x lens). Heat mediated antigen retrieval with Tris-EDTA buffer (pH 9.0). This data was developed using the same antibody clone with 27331-1-PBS in a different storage buffer formulation.



Immunohistochemical analysis of paraffin-embedded mouse ovary tissue slide using 27331-1-AP (Inhibin alpha antibody) at dilution of 1:200 (under 40x lens). Heat mediated antigen retrieval with Tris-EDTA buffer (pH 9.0). This data was developed using the same antibody clone with 27331-1-PBS in a different storage buffer formulation.