

For Research Use Only

TET3 Polyclonal antibody

Catalog Number: 27150-1-AP



Basic Information

Catalog Number: 27150-1-AP	GenBank Accession Number: BC022243	Purification Method: Antigen affinity purification
Size: 150ul , Concentration: 250 µg/ml by Nanodrop;	GeneID (NCBI): 200424	Recommended Dilutions: WB 1:500-1:2000
Source: Rabbit	UNIPROT ID: O43151	
Isotype: IgG	Full Name: tet oncogene family member 3	
Immunogen Catalog Number: AG25877	Calculated MW: 1660 aa, 179 kDa	
	Observed MW: 180 kDa	

Applications

Tested Applications: WB, ELISA	Positive Controls: WB : MCF-7 cells, SKOV-3 cells
Species Specificity: human	

Background Information

Ten-eleven translocation protein 3 (TET3) belongs to the family of ten-eleven translocations (TETs) which induce DNA demethylation and gene regulation at the epigenetic level by converting 5-methylcytosine (5mC) to 5-hydroxymethylcytosine (5hmC) (PMID: 31656201). In ovarian cancer, TET3 is reported as an oncogene or tumor suppressor during tumorigenesis and overexpressed in ovarian cancer tissues (PMID: 27141829).

Storage

Storage:
Store at -20°C. Stable for one year after shipment.
Storage Buffer:
PBS with 0.02% sodium azide and 50% glycerol pH 7.3.
Aliquoting is unnecessary for -20°C storage

*** 20ul sizes contain 0.1% BSA

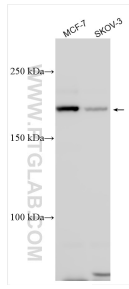
For technical support and original validation data for this product please contact:

T: 1 (888) 4PTGLAB (1-888-478-4522) (toll free in USA), or 1(312) 455-8498 (outside USA)

E: proteintech@ptglab.com
W: ptglab.com

This product is exclusively available under Proteintech Group brand and is not available to purchase from any other manufacturer.

Selected Validation Data



Various lysates were subjected to SDS PAGE followed by western blot with 27150-1-AP (TET3 antibody) at dilution of 1:1000 incubated at room temperature for 1.5 hours.