

For Research Use Only

RAB10 Polyclonal antibody

Catalog Number: 27094-1-AP

Featured Product

2 Publications



Basic Information

Catalog Number: 27094-1-AP	GenBank Accession Number: BC000896	Purification Method: Antigen affinity purification
Size: 150ul, Concentration: 650 µg/ml by Nanodrop and 333 µg/ml by Bradford method using BSA as the standard;	GeneID (NCBI): 10890	Recommended Dilutions: WB 1:500-1:2000 IHC 1:50-1:500 IF 1:50-1:500
Source: Rabbit	Full Name: RAB10, member RAS oncogene family	
Isotype: IgG	Calculated MW: 200 aa, 23 kDa	
Immunogen Catalog Number: AG25830	Observed MW: 23 kDa	

Applications

Tested Applications:
FC, IF, IHC, WB, ELISA

Cited Applications:
IF, WB

Species Specificity:
human, mouse, rat, canine

Cited Species:
human, mouse

Note-IHC: suggested antigen retrieval with TE buffer pH 9.0; (*) Alternatively, antigen retrieval may be performed with citrate buffer pH 6.0

Positive Controls:

WB: MCF-7 cells, HeLa cells, MDCK cells, mouse brain tissue, rat brain tissue

IHC: human colon tissue,

IF: NIH/3T3 cells,

Background Information

Notable Publications

Author	Pubmed ID	Journal	Application
Tatsuo Miyamoto	32368833	EMBO J	WB
Miku Fukawa	37137223	Biochem Biophys Res Commun	IF

Storage

Storage:
Store at -20°C. Stable for one year after shipment.
Storage Buffer:
PBS with 0.02% sodium azide and 50% glycerol pH 7.3.
Aliquoting is unnecessary for -20°C storage

*** 20ul sizes contain 0.1% BSA

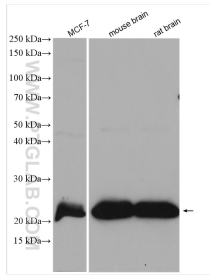
For technical support and original validation data for this product please contact:

T: 1 (888) 4PTGLAB (1-888-478-4522) (toll free in USA), or 1(312) 455-8498 (outside USA)

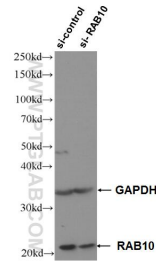
E: proteintech@ptglab.com
W: ptglab.com

This product is exclusively available under Proteintech Group brand and is not available to purchase from any other manufacturer.

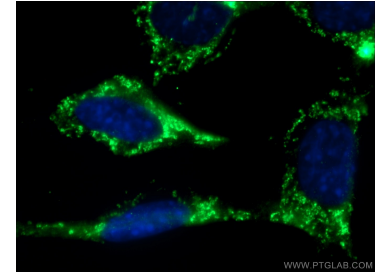
Selected Validation Data



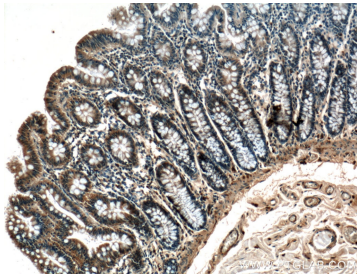
Various lysates were subjected to SDS PAGE followed by western blot with 27094-1-AP (RAB10 antibody) at dilution of 1:1000 incubated at room temperature for 1.5 hours.



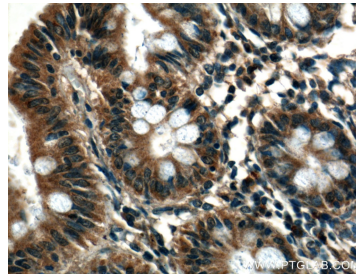
WB result of RAB10 antibody (27094-1-AP; 1:4000; incubated at room temperature for 1.5 hours) with sh-Control and sh-RAB10 transfected HeLa cells.



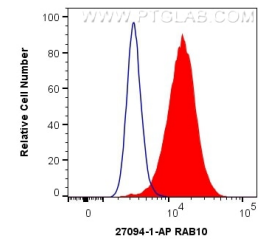
Immunofluorescent analysis of (-20°C Methanol) fixed NIH/3T3 cells using 27094-1-AP (RAB10 antibody) at dilution of 1:50 and Alexa Fluor 488-conjugated AffiniPure Goat Anti-Rabbit IgG(H+L).



Immunohistochemical analysis of paraffin-embedded human colon tissue slide using 27094-1-AP (RAB10 antibody) at dilution of 1:200 (under 10x lens).



Immunohistochemical analysis of paraffin-embedded human colon tissue slide using 27094-1-AP (RAB10 antibody) at dilution of 1:200 (under 40x lens).



1X10⁶ HeLa cells were intracellularly stained with 0.4 ug Anti-Human RAB10 (27094-1-AP) and CoraLite®488-Conjugated AffiniPure Goat Anti-Rabbit IgG(H+L) at dilution 1:1000 (red), or 0.4 ug Control Antibody. Cells were fixed with 4% PFA and permeabilized with Flow Cytometry Perm Buffer (PF00011-C).