

For Research Use Only

FLVCR1 Polyclonal antibody, PBS Only

Catalog Number: 26841-1-PBS

Featured Product



Basic Information

Catalog Number:

26841-1-PBS

Size:

100ug, Concentration: 1 mg/ml by Nanodrop;

Source:

Rabbit

Isotype:

IgG

Immunogen Catalog Number:

AG25220

GenBank Accession Number:

BC048312

GeneID (NCBI):

28982

UNIPROT ID:

Q9Y5Y0

Full Name:

feline leukemia virus subgroup C cellular receptor 1

Calculated MW:

60 kDa

Observed MW:

60 kDa-70 kDa

Purification Method:

Antigen affinity purification

Applications

Tested Applications:

WB, IHC, IF/ICC, IP, Indirect ELISA

Species Specificity:

human, mouse, rat

Background Information

FLVCR1 (feline leukemia virus subgroup C receptor 1) has been reported to have a crucial role in a variety of biological processes, including cell proliferation, cell death, apoptosis, oxidative stress response, cellular differentiation, and metabolism (PMID: 29532854). In addition, FLVCR1 can be applied as a clinical prognostic marker for patients with ESCC (PMID: 33842377).

Storage

Storage:

Store at -80°C.

Storage Buffer:

PBS Only

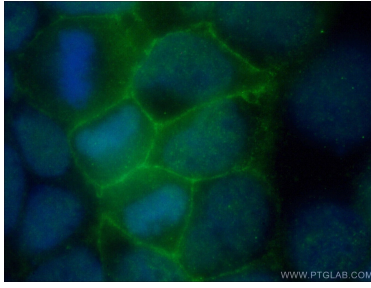
For technical support and original validation data for this product please contact:

T: 1 (888) 4PTGLAB (1-888-478-4522) (toll free in USA), or 1(312) 455-8498 (outside USA)

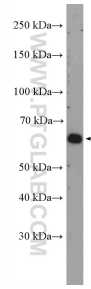
E: proteintech@ptglab.com
W: ptglab.com

This product is exclusively available under Proteintech Group brand and is not available to purchase from any other manufacturer.

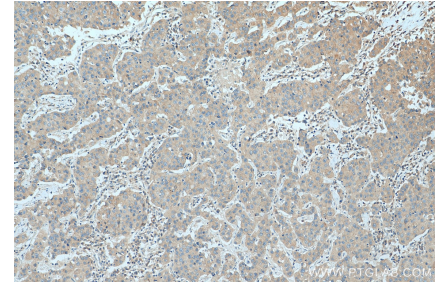
Selected Validation Data



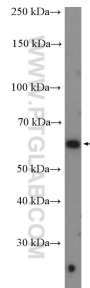
Immunofluorescent analysis of (-20°C Ethanol) fixed Caco-2 cells using 26841-1-AP (FLVCR1 antibody) at dilution of 1:50 and Alexa Fluor 488-Conjugated AffiniPure Goat Anti-Rabbit IgG(H+L). This data was developed using the same antibody clone with 26841-1-PBS in a different storage buffer formulation.



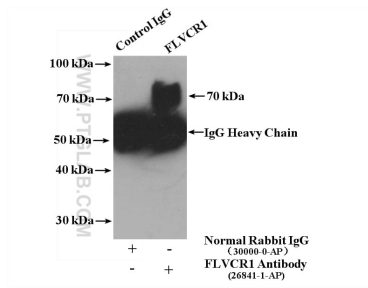
Jurkat cells were subjected to SDS PAGE followed by western blot with 26841-1-AP (FLVCR1 Antibody) at dilution of 1:600 incubated at room temperature for 1.5 hours. This data was developed using the same antibody clone with 26841-1-PBS in a different storage buffer formulation.



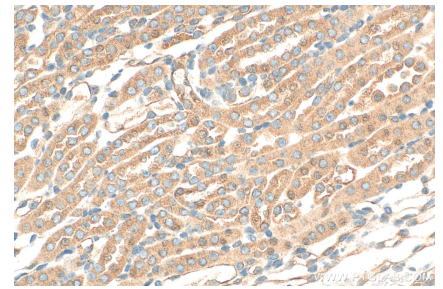
Immunohistochemical analysis of paraffin-embedded human breast cancer tissue slide using 26841-1-AP (FLVCR1 antibody) at dilution of 1:200 (under 10x lens). Heat mediated antigen retrieval with Tris-EDTA buffer (pH 9.0). This data was developed using the same antibody clone with 26841-1-PBS in a different storage buffer formulation.



human placenta tissue were subjected to SDS PAGE followed by western blot with 26841-1-AP (FLVCR1 Antibody) at dilution of 1:600 incubated at room temperature for 1.5 hours. This data was developed using the same antibody clone with 26841-1-PBS in a different storage buffer formulation.



IP result of anti-FLVCR1 (IP:26841-1-AP, 4ug; Detection:26841-1-AP 1:500) with K-562 cells lysate 4400 ug. This data was developed using the same antibody clone with 26841-1-PBS in a different storage buffer formulation.



Immunohistochemical analysis of paraffin-embedded mouse kidney tissue slide using 26841-1-AP (FLVCR1 antibody) at dilution of 1:200 (under 40x lens). Heat mediated antigen retrieval with Tris-EDTA buffer (pH 9.0). This data was developed using the same antibody clone with 26841-1-PBS in a different storage buffer formulation.