

For Research Use Only

# CYYR1 Polyclonal antibody

Catalog Number: 26686-1-AP



## Basic Information

Catalog Number:

26686-1-AP

Size:

150ul, Concentration: 350 ug/ml by Nanodrop;

Source:

Rabbit

Isotype:

IgG

Immunogen Catalog Number:

AG24710

GenBank Accession Number:

BC036761

GeneID (NCBI):

116159

UNIPROT ID:

Q96J86

Full Name:

cysteine/tyrosine-rich 1

Calculated MW:

154 aa, 17 kDa

Observed MW:

7-16 kDa

Purification Method:

Antigen affinity purification

Recommended Dilutions:

IP 0.5-4.0 ug for 1.0-3.0 mg of total protein lysate

## Applications

Tested Applications:

IP, ELISA

Species Specificity:

human, mouse

Positive Controls:

IP: mouse pancreas tissue,

## Background Information

CYYR1 (Cysteine and tyrosine-rich protein 1) is characterized by a central cysteine- and tyrosine-rich domain, including a CCSYYAY box, and a proline-rich region at the carboxy-terminus with repeated PPPY motifs (PMID: 17442112). It is predicted to have a transmembrane domain and a signal peptide, suggesting it may be located in cell or cell compartment membranes (PMID: 17442112). CYYR1 has 6 isoforms, and the molecular weight ranges from 7kd to 16kd.

## Storage

Storage:

Store at -20°C. Stable for one year after shipment.

Storage Buffer:

PBS with 0.02% sodium azide and 50% glycerol pH 7.3.

Aliquoting is unnecessary for -20°C storage

\*\*\* 20ul sizes contain 0.1% BSA

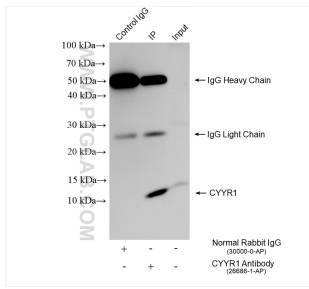
For technical support and original validation data for this product please contact:

T: 1 (888) 4PTGLAB (1-888-478-4522) (toll free in USA), or 1(312) 455-8498 (outside USA)

E: [proteintech@ptglab.com](mailto:proteintech@ptglab.com)  
W: [ptglab.com](http://ptglab.com)

This product is exclusively available under Proteintech Group brand and is not available to purchase from any other manufacturer.

## Selected Validation Data



IP result of anti-CYYR1 (IP:26686-1-AP, 4 $\mu$ g;  
Detection:26686-1-AP 1:500) with mouse pancreas  
tissue lysate 3200  $\mu$ g.