

For Research Use Only

JMJD1C Polyclonal antibody

Catalog Number: 26637-1-AP



Basic Information

Catalog Number: 26637-1-AP	GenBank Accession Number: BC143722	Purification Method: Antigen affinity purification
Size: 150ul , Concentration: 500 ug/ml by Nanodrop;	GeneID (NCBI): 221037	Recommended Dilutions: WB 1:500-1:1000 IF/ICC 1:500-1:2000
Source: Rabbit	UNIPROT ID: Q15652	
Isotype: IgG	Full Name: jumonji domain containing 1C	
Immunogen Catalog Number: AG24348	Calculated MW: 2358 aa, 263 kDa	
	Observed MW: 285 kDa	

Applications

Tested Applications: WB, IF/ICC, ELISA	Positive Controls: WB : U-251 cells, NIH/3T3 cells IF/ICC : HeLa cells,
Species Specificity: human, mouse	

Background Information

JMJD1C, a member of the lysine demethylase 3 (KDM3) family, is universally required for the survival of several types of acute myeloid leukemia (AML) cells with different genetic mutations.

Storage

Storage:
Store at -20°C. Stable for one year after shipment.
Storage Buffer:
PBS with 0.02% sodium azide and 50% glycerol pH 7.3.
Aliquoting is unnecessary for -20°C storage

***** 20ul sizes contain 0.1% BSA**

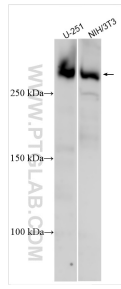
For technical support and original validation data for this product please contact:

T: 1 (888) 4PTGLAB (1-888-478-4522) (toll free in USA), or 1(312) 455-8498 (outside USA)

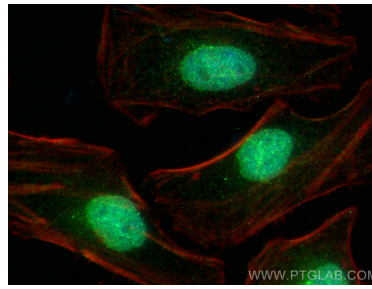
E: proteintech@ptglab.com
W: ptglab.com

This product is exclusively available under Proteintech Group brand and is not available to purchase from any other manufacturer.

Selected Validation Data



Various lysates were subjected to SDS PAGE followed by western blot with 26637-1-AP (JMJD1C antibody) at dilution of 1:800 incubated at room temperature for 1.5 hours.



Immunofluorescent analysis of (4% PFA) fixed HeLa cells using JMJD1C antibody (26637-1-AP) at dilution of 1:1000 and Multi-rAb CoraLite® Plus 488-Goat Anti-Rabbit Recombinant Secondary Antibody (H+L) (RGAR002), CL594-phalloidin (red).