

For Research Use Only

# CPT2 Polyclonal antibody

Catalog Number: 26555-1-AP **26 Publications**



## Basic Information

<b>Catalog Number:</b> 26555-1-AP	<b>GenBank Accession Number:</b> BC002445	<b>Purification Method:</b> Antigen affinity purification
<b>Size:</b> 150ul , Concentration: 550 µg/ml by Nanodrop;	<b>GeneID (NCBI):</b> 1376	<b>Recommended Dilutions:</b> WB 1:2000-1:16000 IP 0.5-4.0 ug for 1.0-3.0 mg of total protein lysate IHC 1:300-1:1200 IF 1:50-1:500
<b>Source:</b> Rabbit	<b>Full Name:</b> carnitine palmitoyltransferase 2	
<b>Isotype:</b> IgG	<b>Calculated MW:</b> 74 kDa	
<b>Immunogen Catalog Number:</b> AG24897	<b>Observed MW:</b> 65-70 kDa	

## Applications

<b>Tested Applications:</b> IF, IHC, IP, WB, ELISA	<b>Positive Controls:</b>
<b>Cited Applications:</b> IF, IHC, IP, WB	<b>WB:</b> HEK-293T cells, mouse heart tissue, T-47D cells, MCF-7 cells, LNCaP cells, mouse liver tissue, rat liver tissue
<b>Species Specificity:</b> human, mouse, rat	<b>IP:</b> mouse liver tissue,
<b>Cited Species:</b> human, rat, mouse, bovine	<b>IHC:</b> mouse heart tissue,
	<b>IF:</b> C2C12 cells,
<b>Note-IHC: suggested antigen retrieval with TE buffer pH 9.0; (*) Alternatively, antigen retrieval may be performed with citrate buffer pH 6.0</b>	

## Background Information

### Notable Publications

Author	Pubmed ID	Journal	Application
Lihua Luo	34593005	J Nanobiotechnology	WB
Pablo Ranea-Robles	34651140	Kidney360	WB
Pablo Ranea-Robles	34564857	J Inherit Metab Dis	WB

## Storage

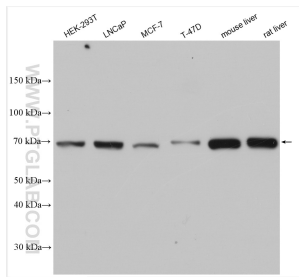
**Storage:**  
Store at -20°C. Stable for one year after shipment.  
**Storage Buffer:**  
PBS with 0.02% sodium azide and 50% glycerol pH 7.3.  
Aliquoting is unnecessary for -20°C storage

\*\*\* 20ul sizes contain 0.1% BSA

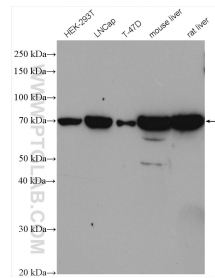
For technical support and original validation data for this product please contact:  
T: 1 (888) 4PTGLAB (1-888-478-4522) (toll free in USA), or 1(312) 455-8498 (outside USA)  
E: proteintech@ptglab.com  
W: ptglab.com

This product is exclusively available under Proteintech Group brand and is not available to purchase from any other manufacturer.

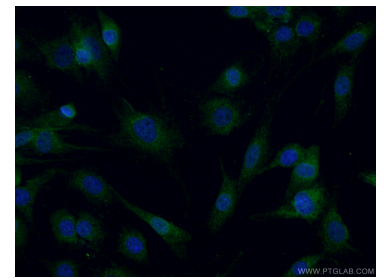
## Selected Validation Data



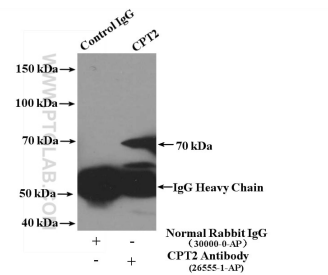
Various lysates were subjected to SDS PAGE followed by western blot with 26555-1-AP (CPT2 antibody) at dilution of 1:8000 incubated at room temperature for 1.5 hours.



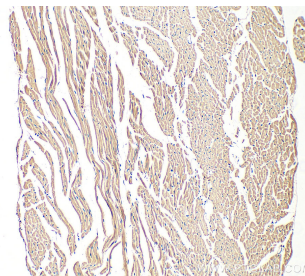
Various lysates were subjected to SDS PAGE followed by western blot with 26555-1-AP (CPT2 antibody) at dilution of 1:2000 incubated at room temperature for 1.5 hours.



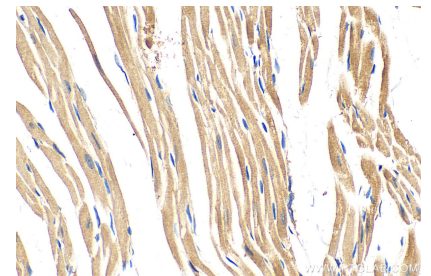
Immunofluorescent analysis of (4% PFA) fixed C2C12 cells using 26555-1-AP (CPT2 antibody) at dilution of 1:50 and CoraLite488-Conjugated AffiniPure Goat Anti-Rabbit IgG(H+L).



IP Result of anti-CPT2 (IP:26555-1-AP, 4ug; Detection:26555-1-AP 1:300) with mouse liver tissue lysate 6000ug.



Immunohistochemical analysis of paraffin-embedded mouse heart tissue slide using 26555-1-AP (CPT2 antibody) at dilution of 1:600 (under 10x lens). Heat mediated antigen retrieval with Tris-EDTA buffer (pH 9.0).



Immunohistochemical analysis of paraffin-embedded mouse heart tissue slide using 26555-1-AP (CPT2 antibody) at dilution of 1:600 (under 40x lens). Heat mediated antigen retrieval with Tris-EDTA buffer (pH 9.0).