

For Research Use Only

ERF Polyclonal antibody

Catalog Number: 26468-1-AP



Basic Information

Catalog Number:

26468-1-AP

Size:

150ul, Concentration: 750 ug/ml by Nanodrop;

Source:

Rabbit

Isotype:

IgG

Immunogen Catalog Number:

AG24189

GenBank Accession Number:

BC022231

GeneID (NCBI):

2077

UNIPROT ID:

P50548

Full Name:

Ets2 repressor factor

Calculated MW:

548 aa, 59 kDa

Observed MW:

90 kDa

Purification Method:

Antigen affinity purification

Recommended Dilutions:

WB 1:1000-1:4000

IP 0.5-4.0 ug for 1.0-3.0 mg of total protein lysate

Applications

Tested Applications:

WB, IP, ELISA

Species Specificity:

human

Positive Controls:

WB : A431 cells, A549 cells

IP : A431 cells,

Background Information

ERF (Ets2 repressor factor) is also named as PE-2. Erf is a gene for a ubiquitously expressed Ets DNA-binding domain-containing transcriptional repressor regulated by Erk-dependent phosphorylation (PMID: 28694332, PMID: 35258130). Erf is involved in T cell maturation, acting as a positive regulator during CD4 and eventually CD8 lineage commitment, while negatively regulates the production of $\gamma\delta$ T cells (PMID: 35258130). Erf is required for both primitive and erythromyeloid progenitor waves of hematopoietic stem cell (HSC)-independent hematopoiesis as well as for the normal function of HSCs (PMID: 28694332). ETS2 repressor factor (ERF) insufficiency causes craniosynostosis (CRS4) in humans and mice. ERF is an ETS domain transcriptional repressor regulated by Erk1/2 phosphorylation via nucleo-cytoplasmic shuttling (PMID: 37175668).

Storage

Storage:

Store at -20°C. Stable for one year after shipment.

Storage Buffer:

PBS with 0.02% sodium azide and 50% glycerol pH 7.3.

Aliquoting is unnecessary for -20°C storage

*** 20ul sizes contain 0.1% BSA

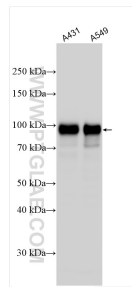
For technical support and original validation data for this product please contact:

T: 1 (888) 4PTGLAB (1-888-478-4522) (toll free in USA), or 1(312) 455-8498 (outside USA)

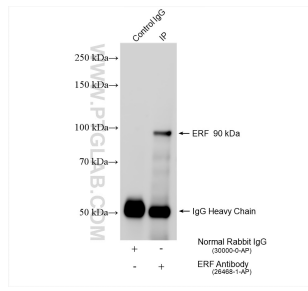
E: proteintech@ptglab.com
W: ptglab.com

This product is exclusively available under Proteintech Group brand and is not available to purchase from any other manufacturer.

Selected Validation Data



Various lysates were subjected to SDS PAGE followed by western blot with 26468-1-AP (ERF antibody) at dilution of 1:2000 incubated at room temperature for 1.5 hours.



IP result of anti-ERF (IP:26468-1-AP, 4ug; Detection:26468-1-AP 1:2000) with A431 cells lysate 1040 ug.